

Configuring IndigoVision

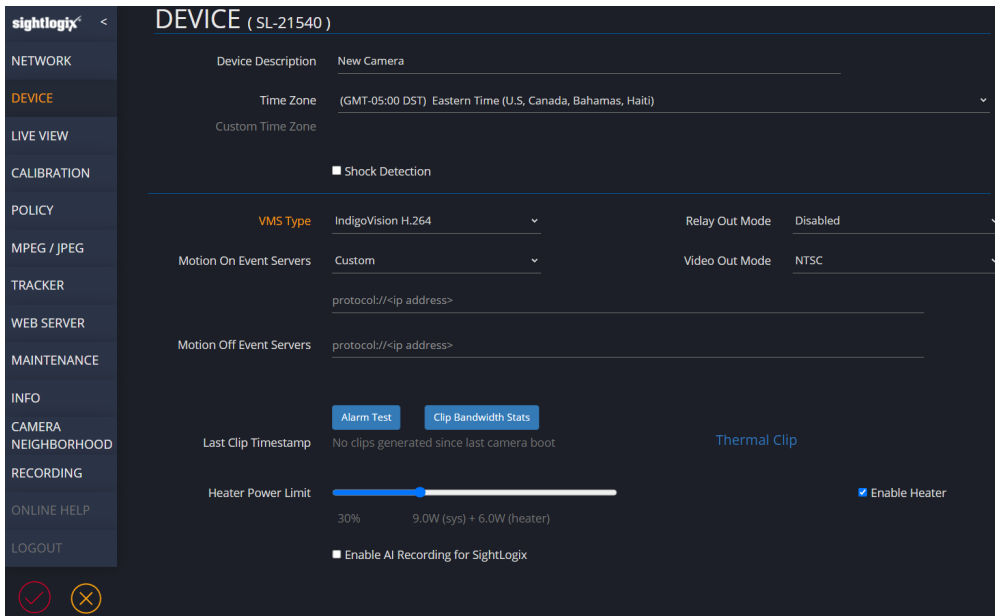
Last Modified on 09/25/2024 1:58 pm EDT

Tested with Indigo Vision 19.1
Tested with SightSensor Firmware 16.2.232
Tested with SightTracker PTZ Firmware 17.0.169
(SightSensor HD only tested with Indigo 15.1; earlier version compatibility not guaranteed)

Add SightLogix Devices as an ONVIF Device

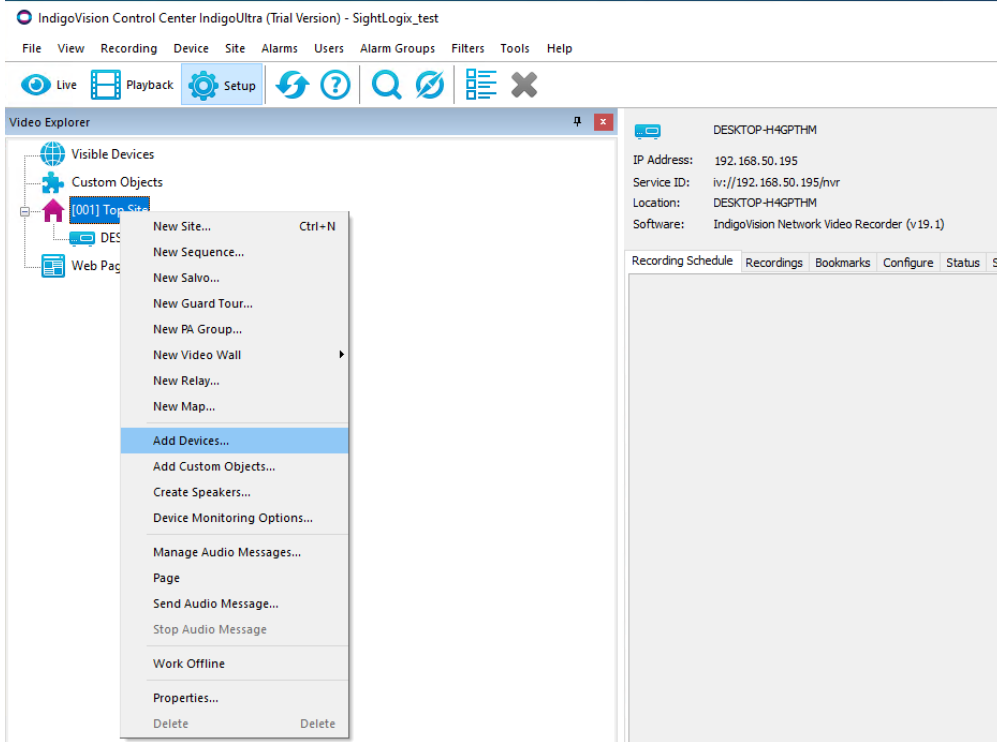
Adding Devices with WebConfig

- In WebConfig, go to the Camera tab and set VMS Type to either IndigoVision MPEG4 or IndigoVision H.264 (note that SightSensor HD only provides the H.264 option).
- Click Save and camera will reboot

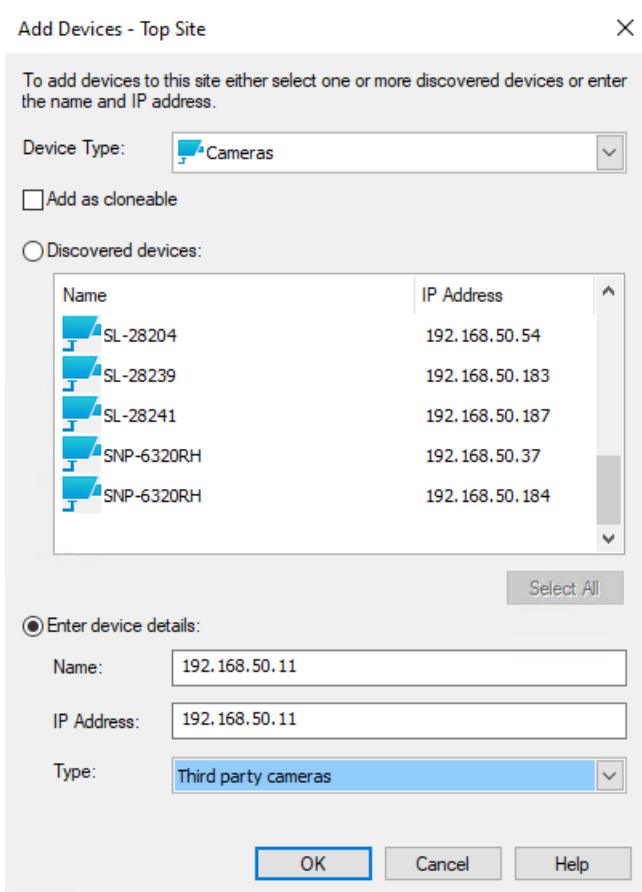


Adding SightLogix Devices to IndigoVision

- Right-click the site in the Site Explorer and select Add Devices.



- Input the Sensor Info and select Third Party Cameras as Type.



Note that the Name field does not work during the adding procedure. If you want to change camera name:

- Add the device
- Right click on the device -> Properties
- In the Details tab, select “Use Custom Name” and enter new camera name

SL-21540 Properties ×

Details

Live Video

Recording

Device Access

Custom Camera Overlay

On Screen Display

PTZ

Fisheye

Hidden Zone

Analytics Configuration

Decoder Options

Display Name: Use Device Name
 Use Custom Name

Matrix Number:

Location: USA

Device Name: SL-21540

IP Address: 192.168.50.11

UTC Time: 23 Sep 2024 15:01 UTC

Local Time: Unavailable

Software: ONVIF Transmitter

ONVIF Streaming Profiles: unknown

Service ID: urn:uuid:9a3dd866-79ba-11ef-b14c-29f419802eba

Note for SightSensor HD: To stream both profiles simultaneously, you have to clone the camera in the control center to show as a second camera in the tree. To do this:

- Select the “Add as cloneable” checkbox before adding
- Right-click the camera and choose Clone. This creates a second copy of the camera.
- You can now right-click the cloned camera, choose properties, choose the “Live Video” tab, and change the streaming profile to profile 1.

SL-28239 Properties >

Details

Live Video

Recording

Device Access

Custom Camera Overlay

On Screen Display

PTZ

Fisheye

Hidden Zone

Analytics Configuration

Decoder Options

Use same settings as parent site

Users:

Name	Stream Settings
Default	H264, Connection: Reliable

Default stream settings

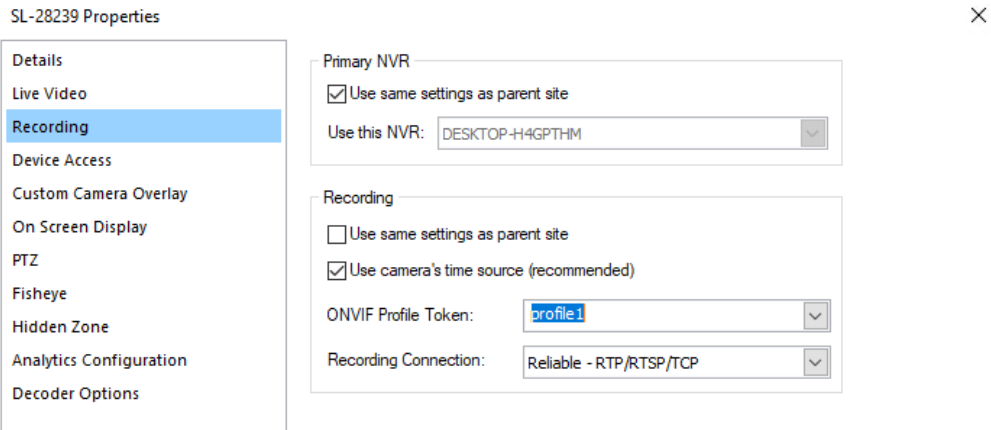
Use same video profile:
ONVIF Profile Token:

Switch video profiles:
ONVIF Profile Token (High Res):

ONVIF Profile Token (Low Res):

Connection:

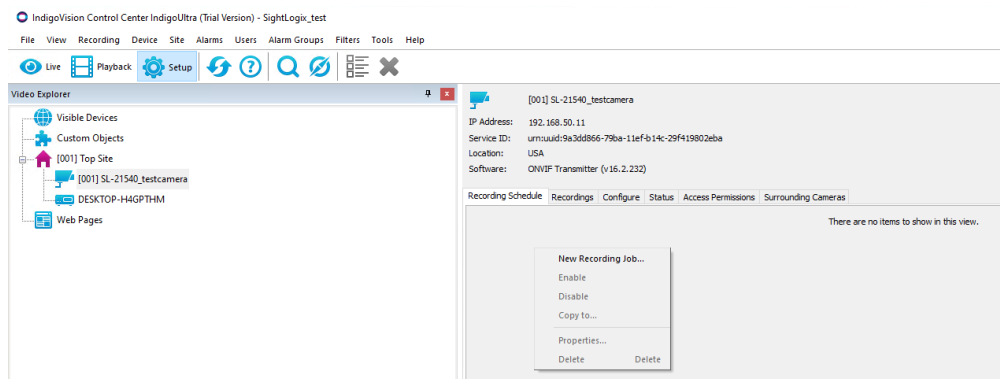
- Set the Recording to profile 1



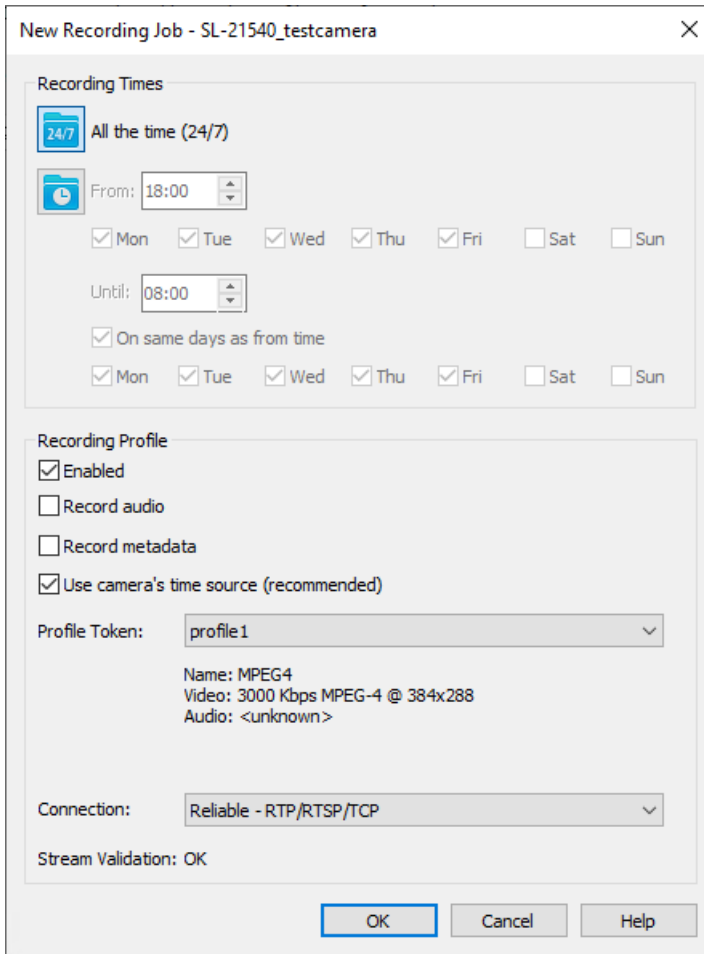
How to Enable Recording

To create a continuous recording:

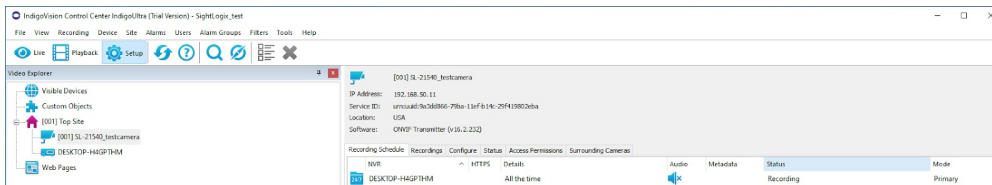
- Highlight the SightLogix device in the site explorer window
- Select the Recording Schedule tab
- Right mouse click to create a new Recording Job



- The New Recording Job window opens. Complete your options and click OK.



- You will see your new Recording Job, as shown.



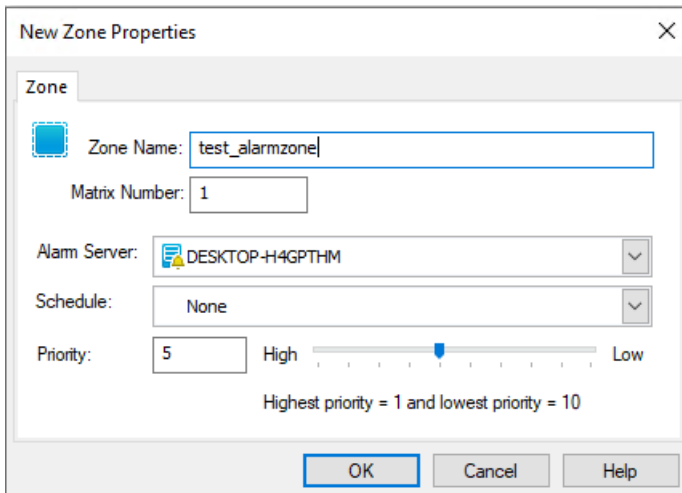
Alarm Setup Procedure

1. Creating a New Zone

Zones are used to manage alarms. An Alarm server must be accessible before the Control Center can receive an alarm from any SightLogix device.

- Go to the Alarms Explorer tab in the Setup view and right-click a site. Select New Zone...

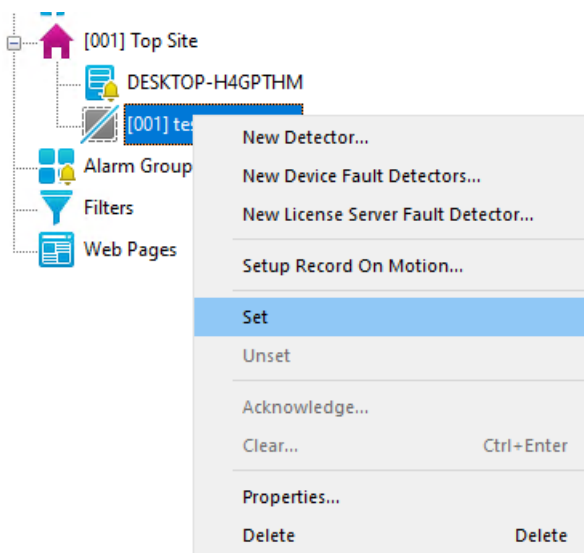
The New Zone dialog opens



- Select the Alarm Server the zone will use.
- Select a schedule for the zone. The schedule defines when the zone will be active. If no schedules are available, you will need to create one. Please consult your Control Center manual for details on priority. The priority determines the order in which alarms appear in the Events Window, and how alarms in the zone are escalated.
- Click OK.

The new zone is displayed as unset in the Site Explorer.

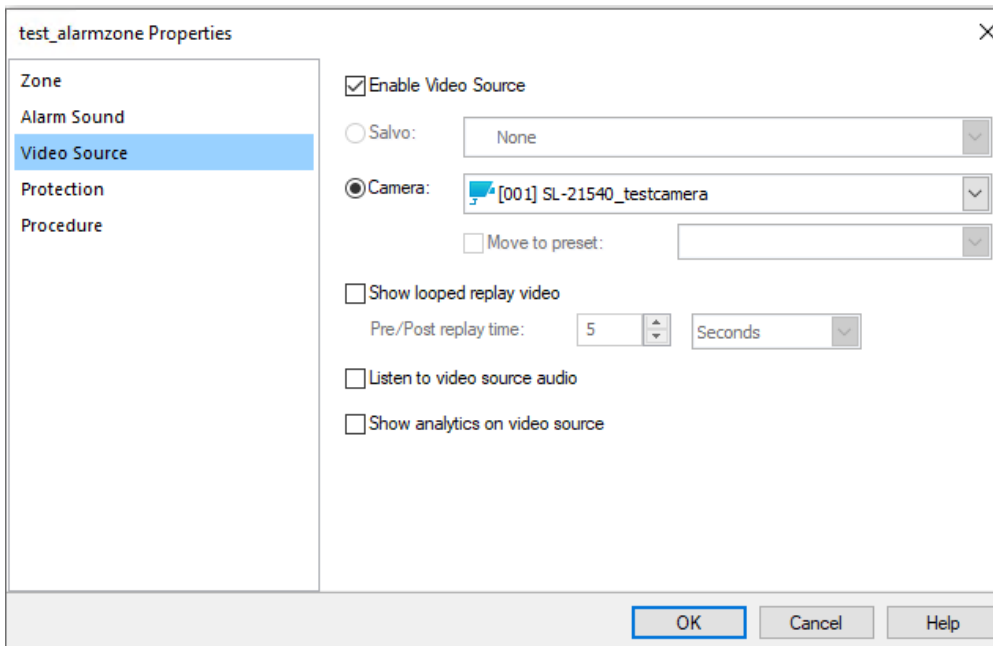
- Configure the zone alarm to show in the timeline
- Right click on the new zone and select "Set"



Set the video source of the zone to the camera to view the alarm on the timeline

- Right click on the zone, select Properties -> Video Source -> Enable Video Source

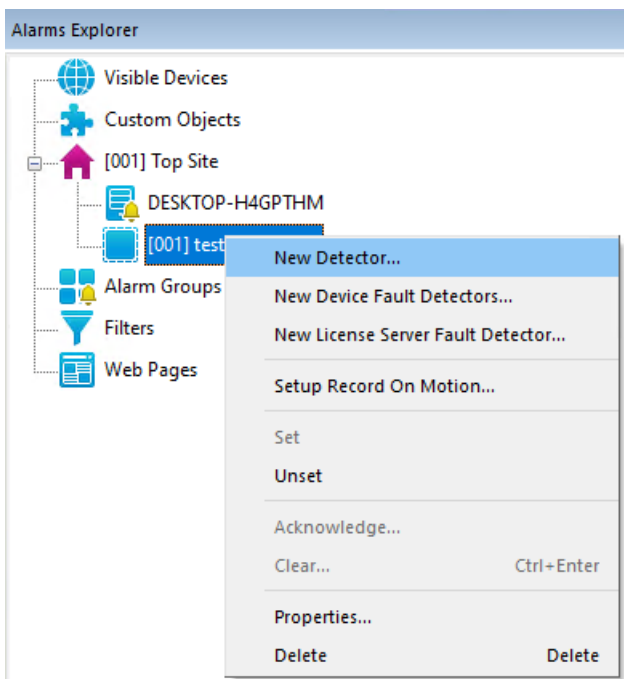
- Select your camera



2. Creating a New Detector

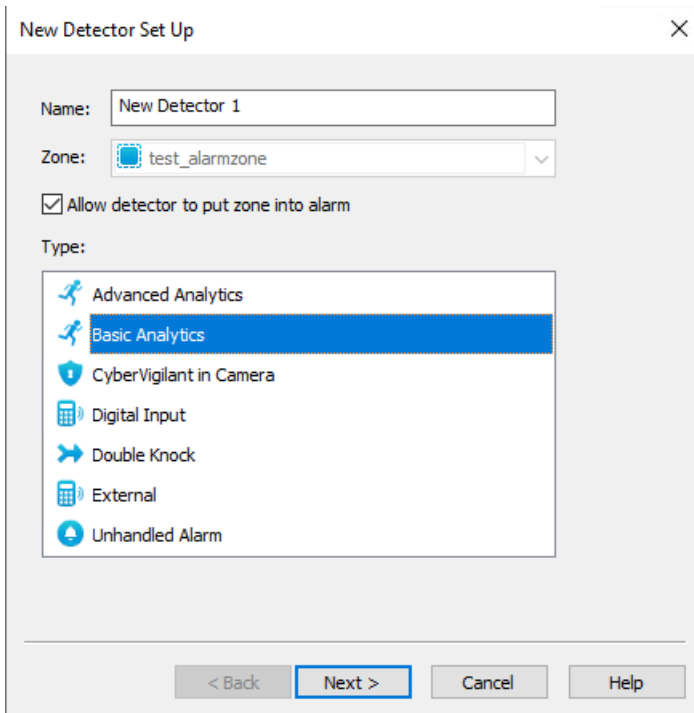
Detectors comprise an activation event and a deactivation event. Use the New Detector wizard to create detectors for analytic events for the SightSensor. SightSensors should be already configured and calibrated.

- Select the zone you want to add detectors to from the Alarms tab of the Site, right-click, and select New Detector....



- The New Detector wizard opens.

- Enter a name for the new detector, and select Basic Analytics as the type of event that will activate the detector, and click Next.

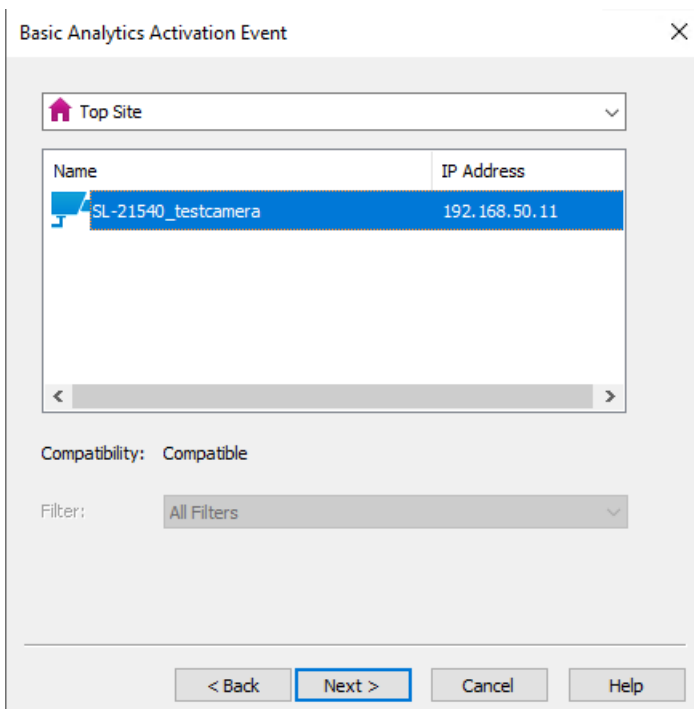


The 'New Detector Set Up' dialog box contains the following fields and options:

- Name:** Text input field containing 'New Detector 1'.
- Zone:** Dropdown menu with 'test_alarmzone' selected.
- Allow detector to put zone into alarm
- Type:** List box with the following items:
 - Advanced Analytics
 - Basic Analytics (highlighted)
 - CyberVigilant in Camera
 - Digital Input
 - Double Knock
 - External
 - Unhandled Alarm

At the bottom, there are four buttons: '< Back', 'Next >', 'Cancel', and 'Help'.

- Select the camera for this Detector and click Next.



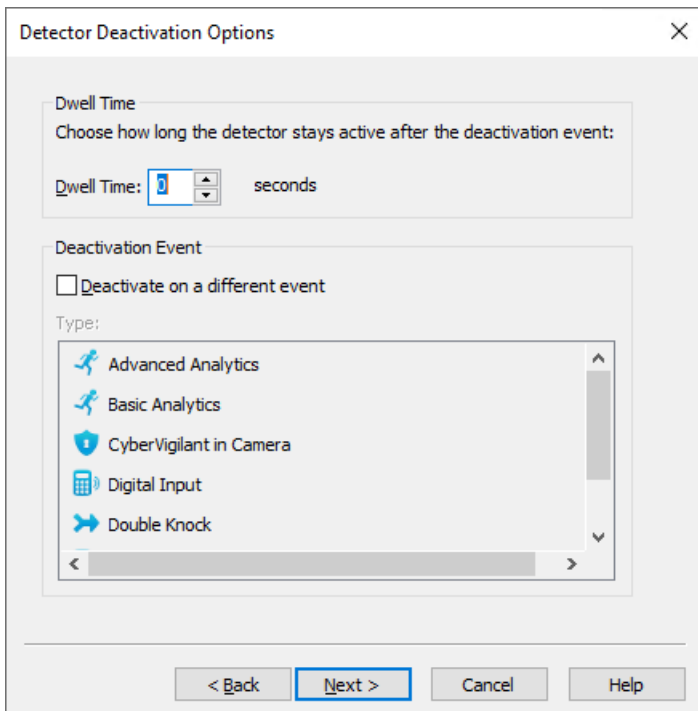
The 'Basic Analytics Activation Event' dialog box contains the following fields and options:

- Top Site:** Dropdown menu with a house icon and 'Top Site' selected.
- Table:** A table with two columns: 'Name' and 'IP Address'.

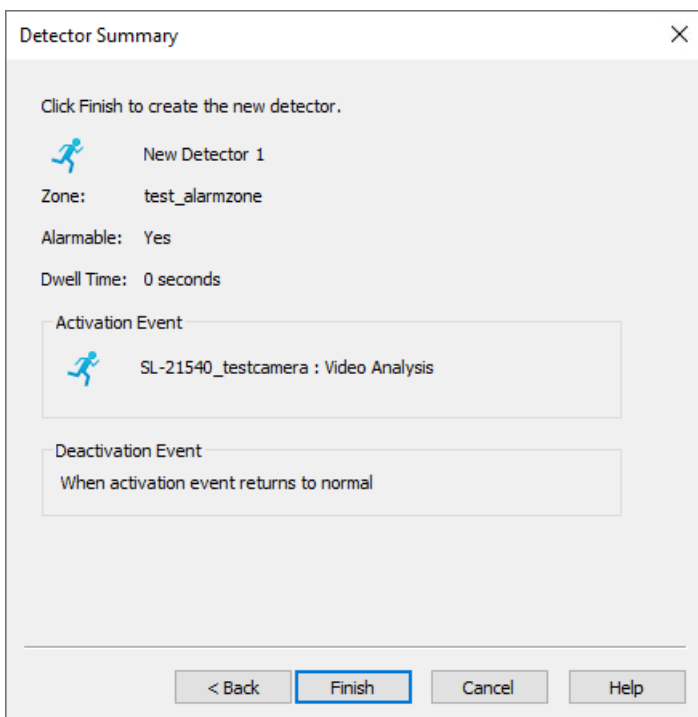
Name	IP Address
SL-21540_testcamera	192.168.50.11
- Compatibility:** Text label 'Compatible'.
- Filter:** Dropdown menu with 'All Filters' selected.

At the bottom, there are four buttons: '< Back', 'Next >', 'Cancel', and 'Help'.

- Set the dwell time if necessary and click Next



- Click Finish



Note for SightSensor HD: Repeat the zone and detector steps for the cloned camera.

Verifying Alarms and Alerts

Select the Playback tab in the Site explorer window to review video and alarms. The zone alarm appears as a red line. Camera alarms appear as white lines (detector activations).

Each Zone alarms will appear in the Alarm window.

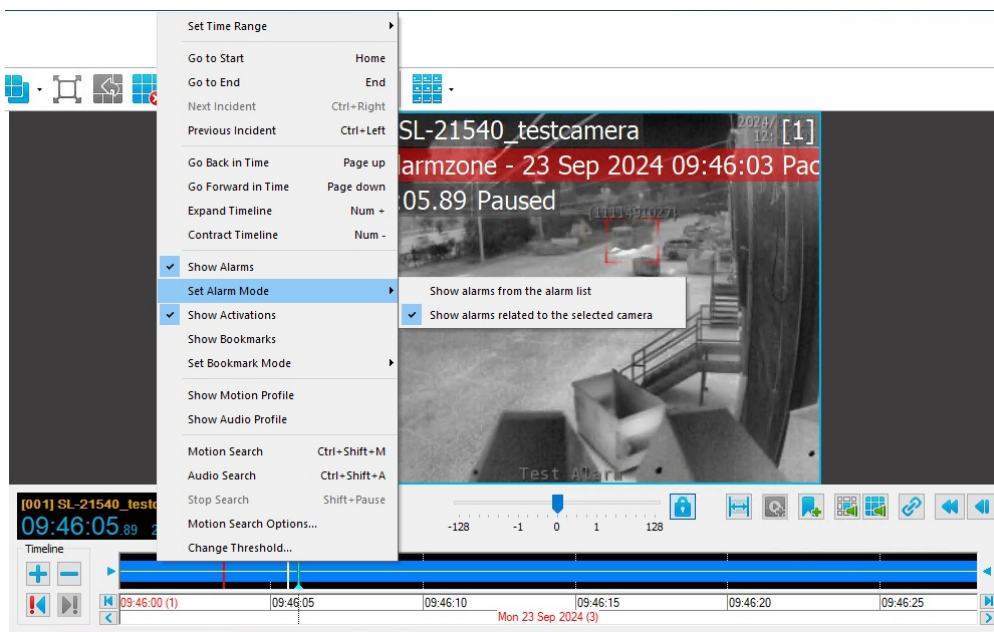
Name	Priority	Site	Time	Owner
test_alarmzone	5	Top Site	23 Sep 2024 08:14:48 Pacific Daylight Time	None

- Right click on the blue timeline and make sure “Show Alarms” is checked.
- Right click on the blue timeline and make sure “Show Activations” is checked.

There are several ways to view Zone alarms:

- Right click timeline -> Set Alarm Mode -> “Shows alarms from the alarm list”.
This will show all zone alarms in the timeline.
- Right click timeline -> Set Alarm Mode -> “Shows alarms related to the selected camera”.

This will show alarms on the selected camera. The Zone must be set in order for this to show alarms



You will see the Zone turned red after an alarm occurs in the Alarm Explorer. The detector will be red during an alarm activation.



Alarms Explorer test_alarmzone

Alarm Server: DESKTOP-H4

Detectors Alarms Activation

Name
New Detector 1

Visible Devices

Custom Objects

- [001] Top Site
 - DESKTOP-H4GPTHM
 - [001] test_alarmzone
 - New Detector 1

Alarm Groups

Filters

Web Pages