

Configuring Avigilon Control Center 6 (SightSensor and SightTracker PTZ)

Last Modified on 10/28/2024 4:02 pm EDT

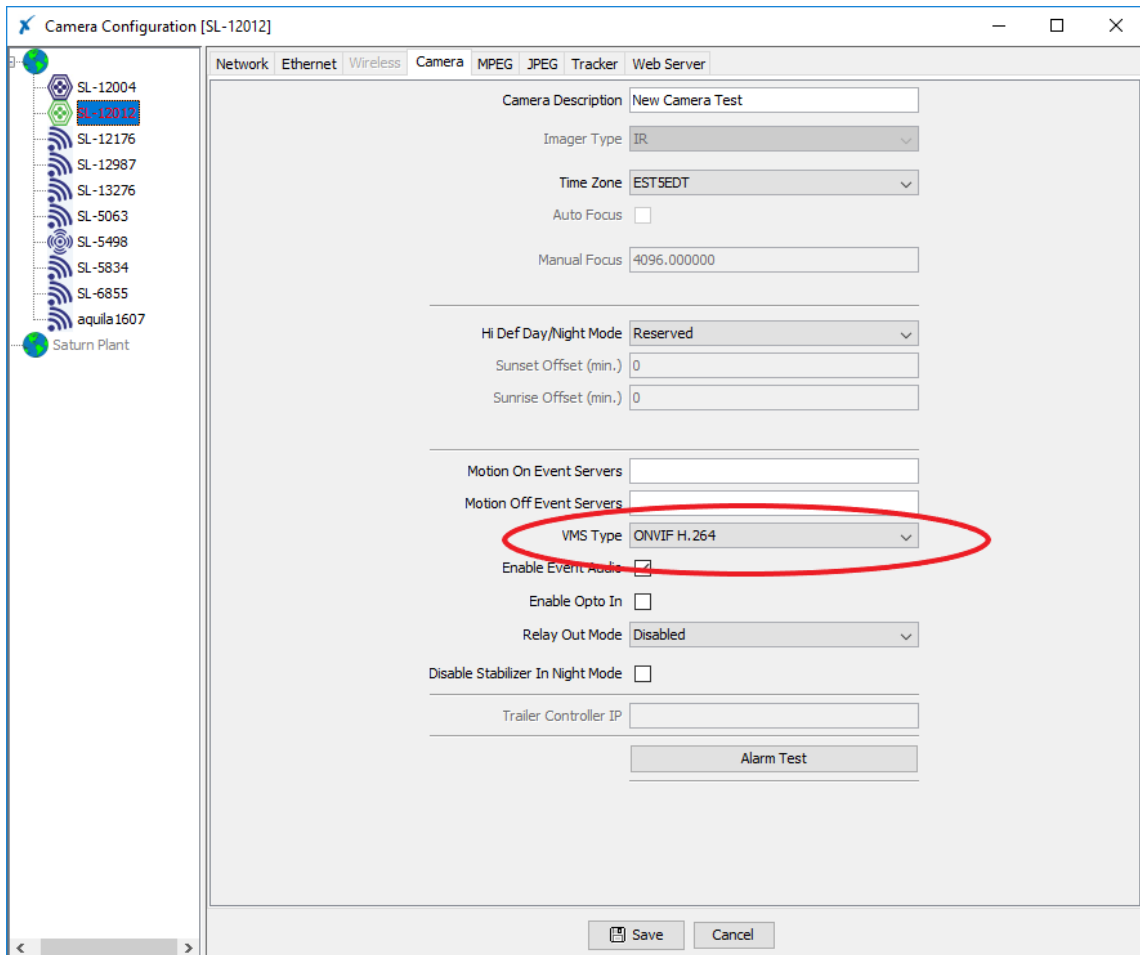
Tested with Avigilon Control Center 6.8.4.0
Tested with SightLogix Firmware 10.10.29 and 15.11.87

Add SightLogix Devices as an ONVIF Device

Adding Devices with SightMonitor

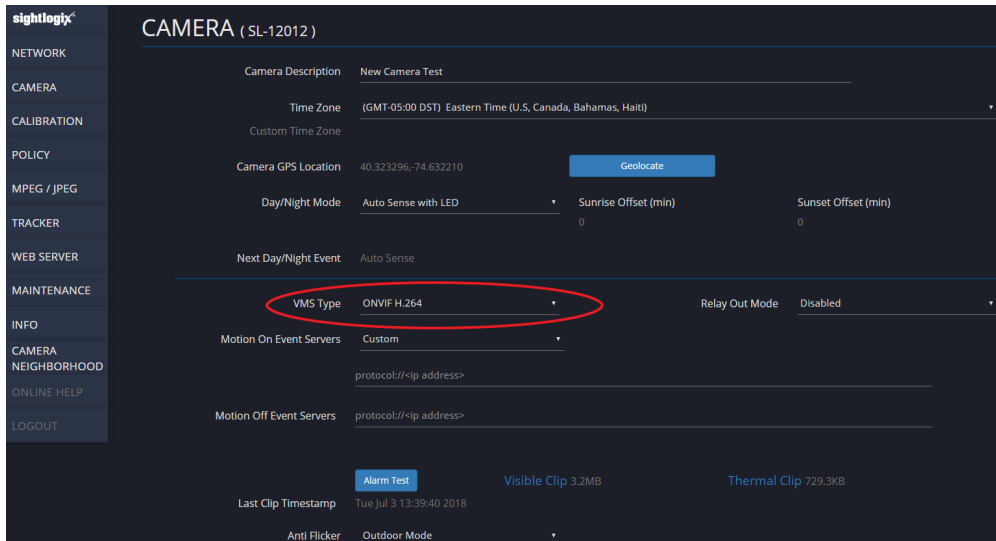
If you are using SightMonitor, follow these steps. If you are using WebConfig, scroll to the next section

- In SightMonitor, right-click your device, click Configure, choose the Camera tab, and set the VMS Type to either ONVIF H.264 (preferred) or ONVIF MPEG4.



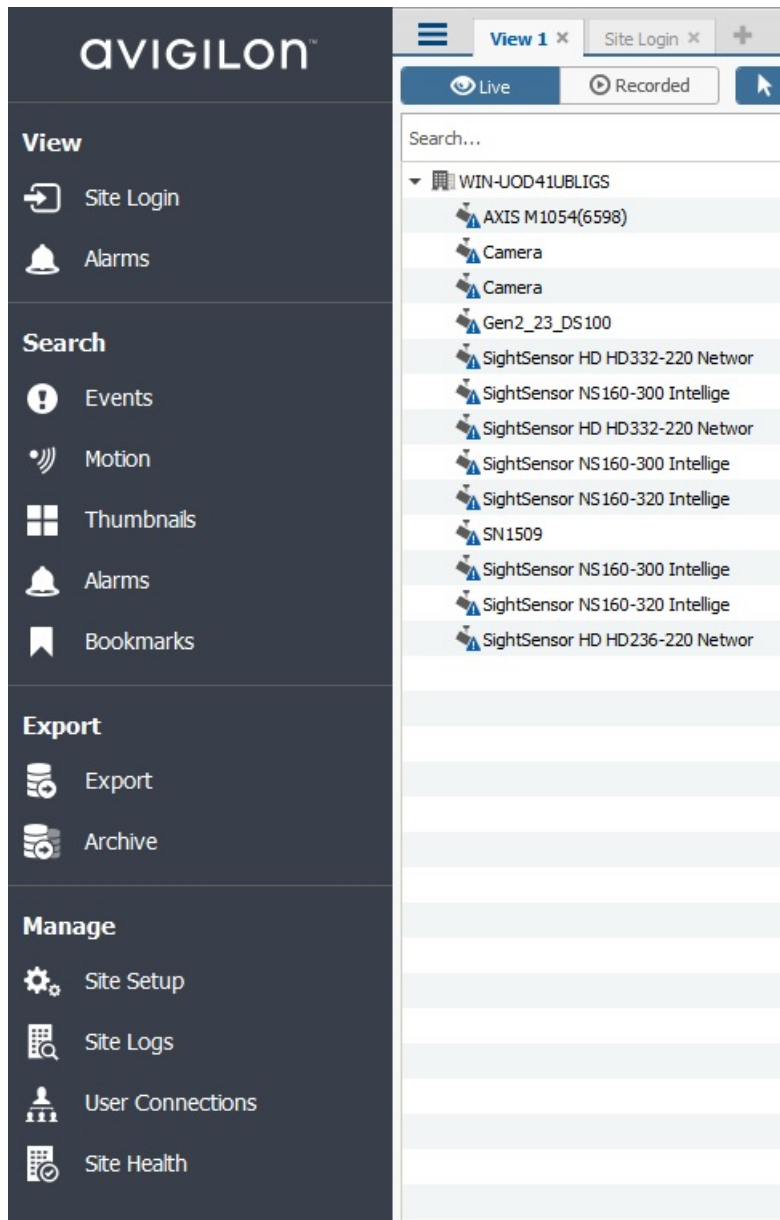
Adding Devices with WebConfig

- In WebConfig, go to the Camera tab and set VMS Type to either ONVIF H.264 (preferred) or ONVIF MPEG4

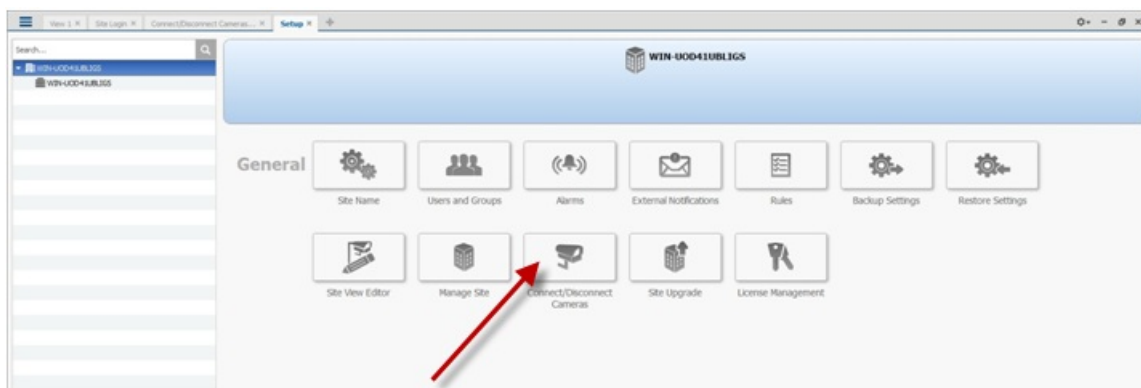


Next, add devices individually as hardware units.

- Log into AvigilonControl Center , click the upper left menu icon (three bars) and select *Manage Site Setup* from the left-side navigation.

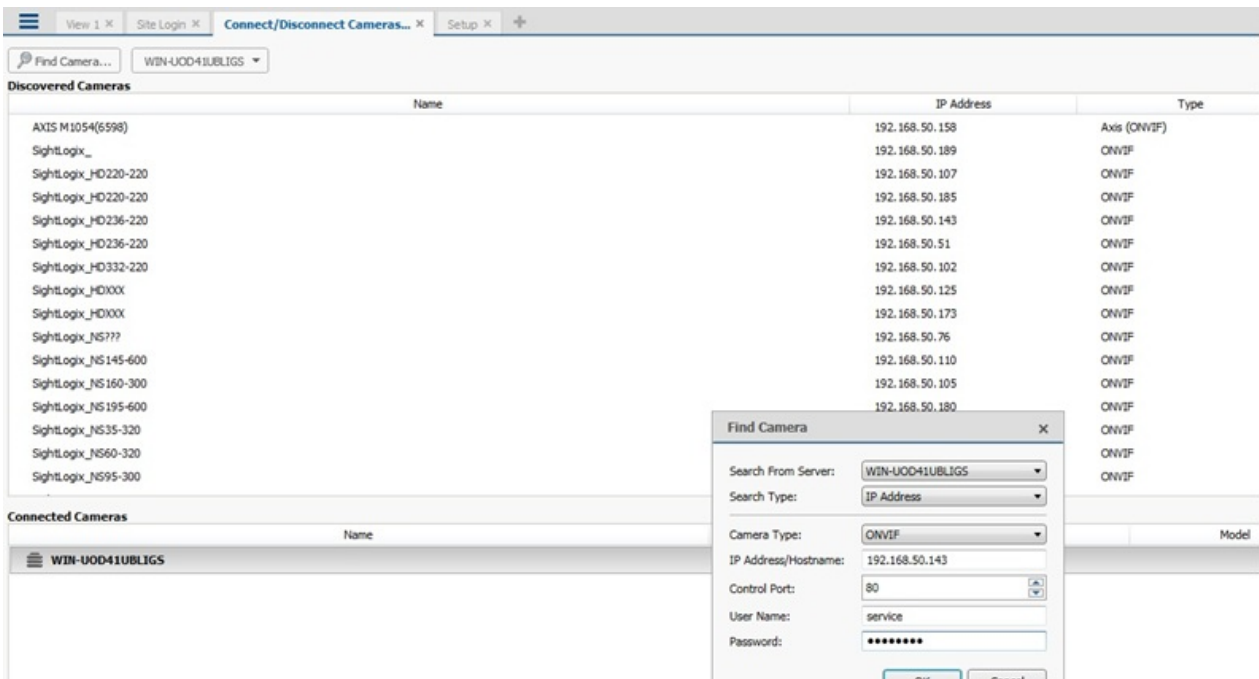


- Click Connect/Disconnect cameras.

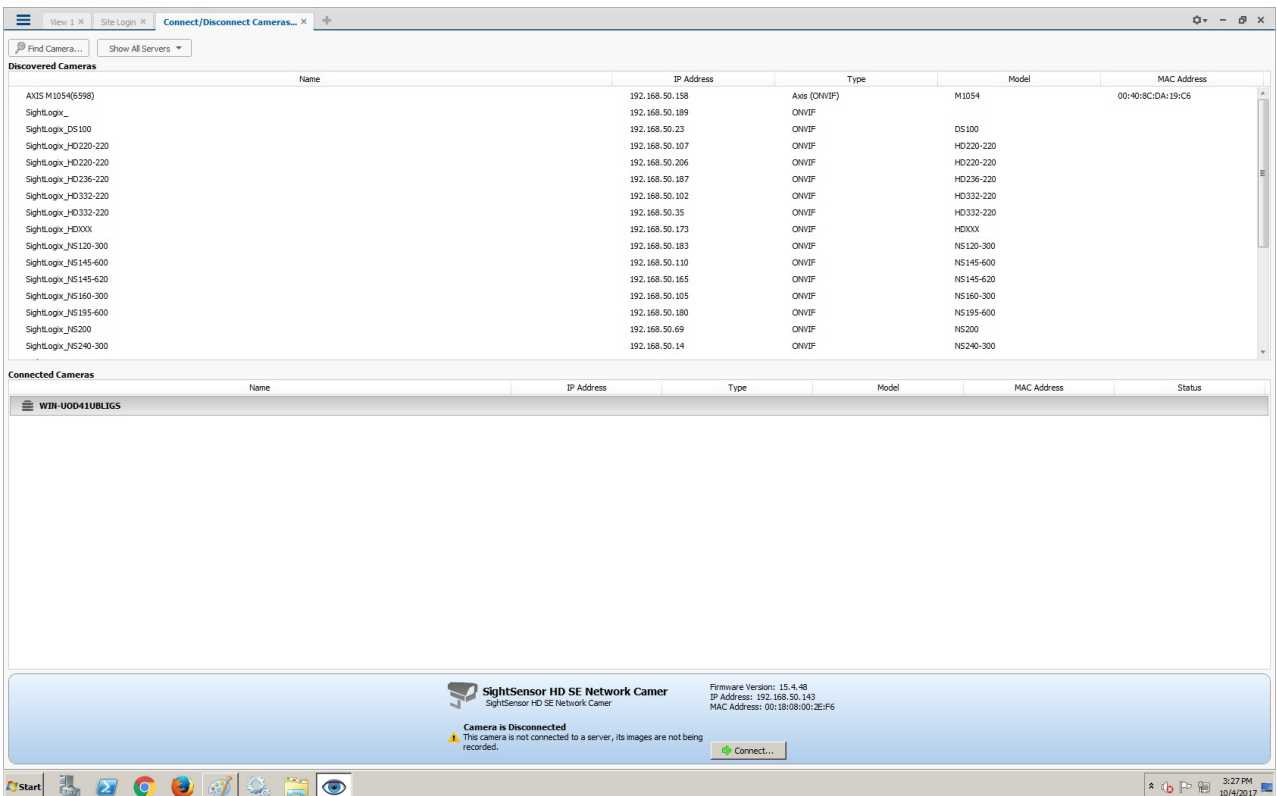


- Click Find Camera and enter the SightLogix camera's information in the Find Camera window and click OK.
 - Camera type is ONVIF.

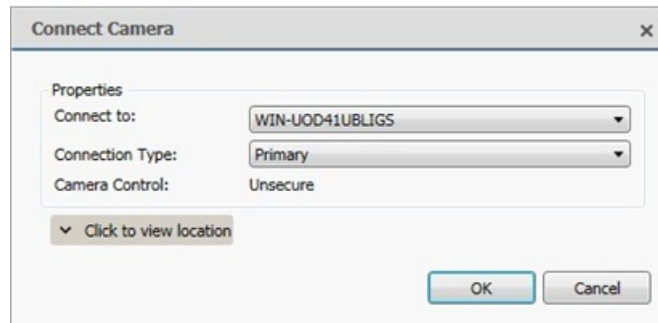
- Username/password is service/test1234



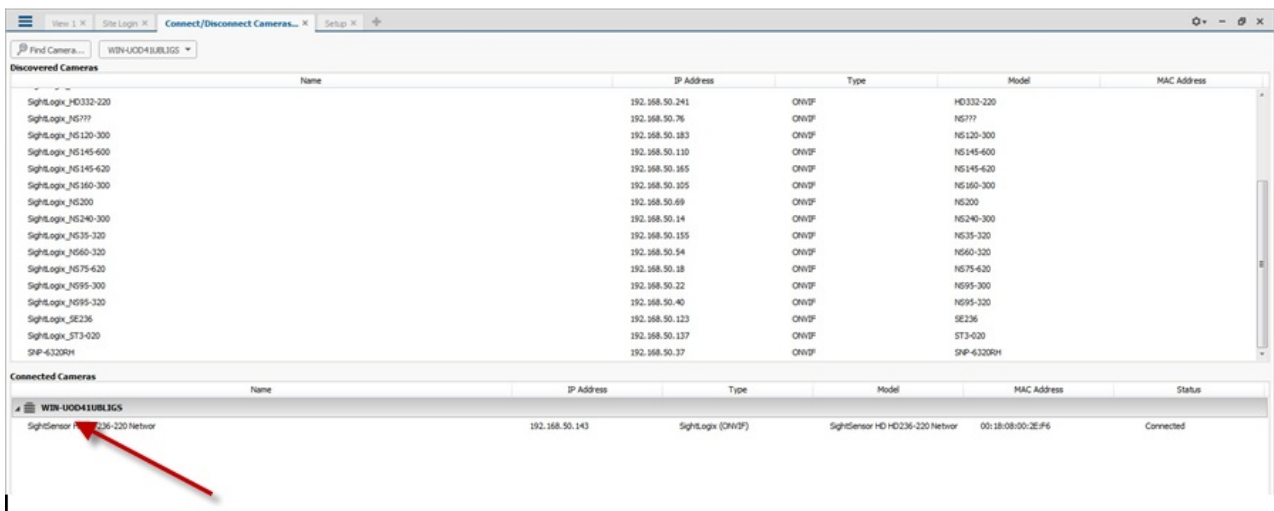
- Click OK. The following screen opens, showing the newly added camera at the bottom.



- Click Connect. The Connect Camera window opens.



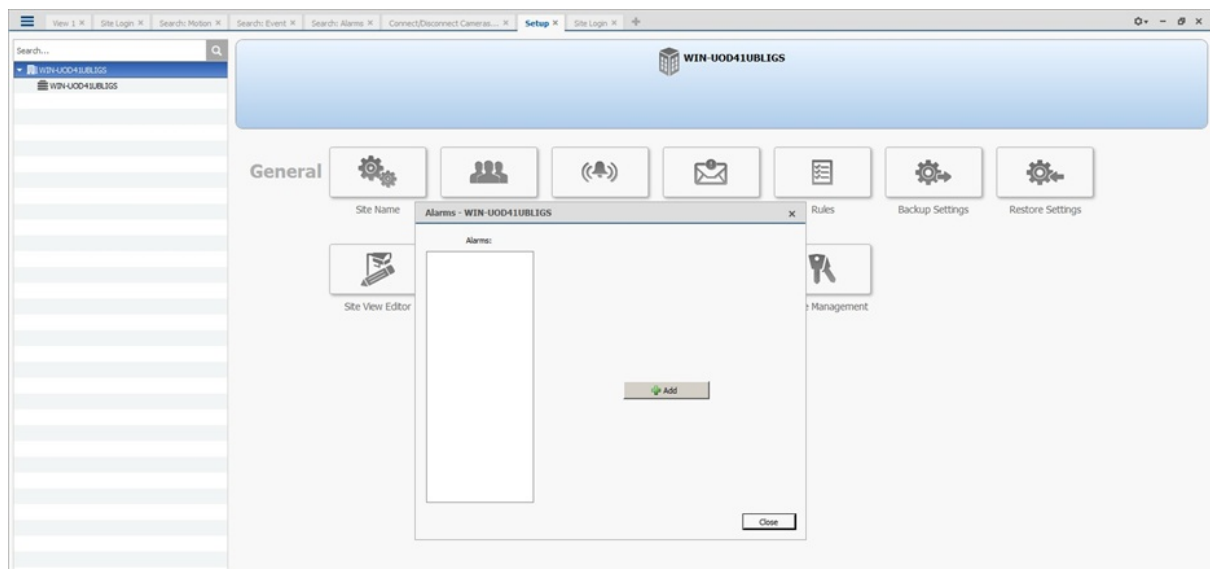
- Click OK.
- Once connected, the camera will be shown at the bottom under Connected Cameras.



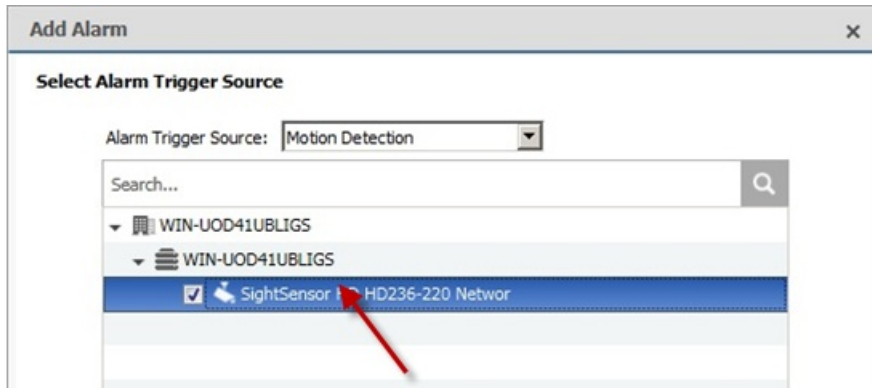
Setting Alarms

Once you've added cameras, create and configure alarms as follows:

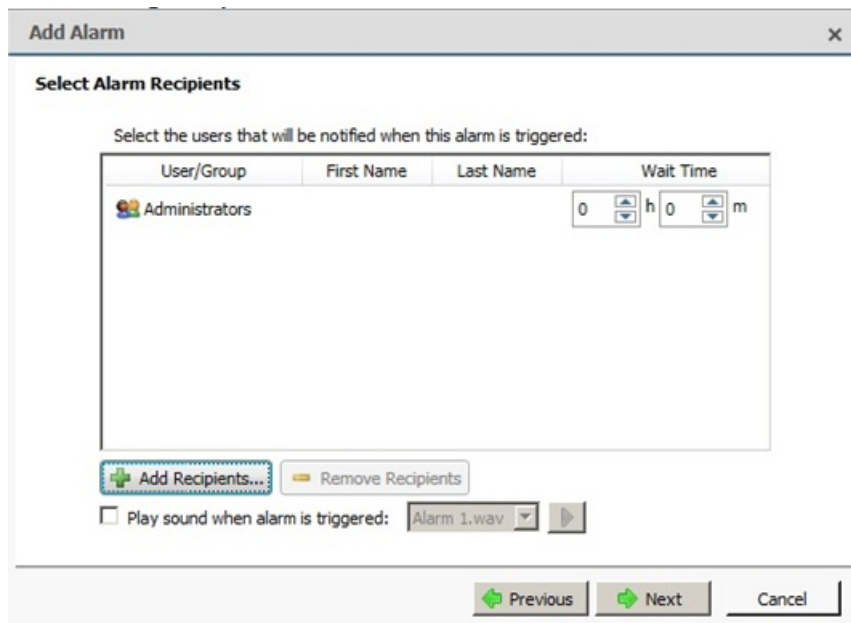
- Under the setup menu, click *Alarms* and click *Add*.



- Select *Motion Detection* under Alarm Trigger Source.
- Select the camera which you want to associate with this alarm.



- Add the group/user to receive the alarm notification and click Next.



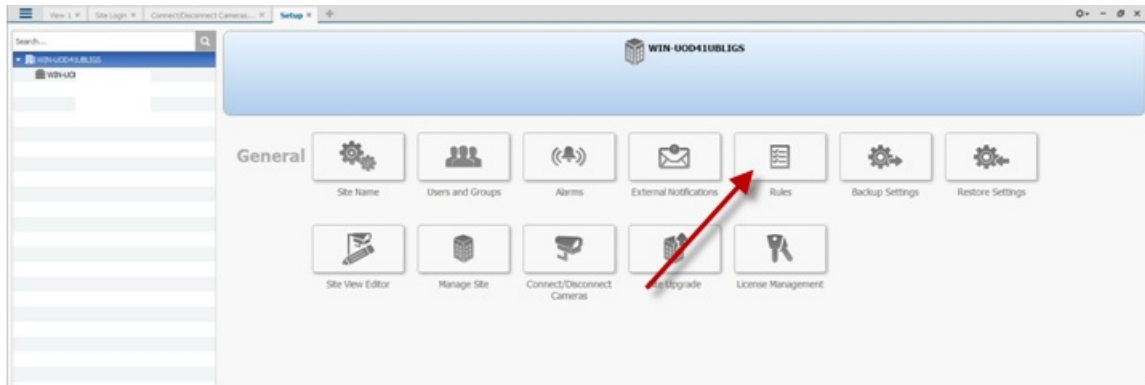
- Provide a name for the alarm and click *Finish*.

- After adding the alarm, the Alarm properties should look as follows:

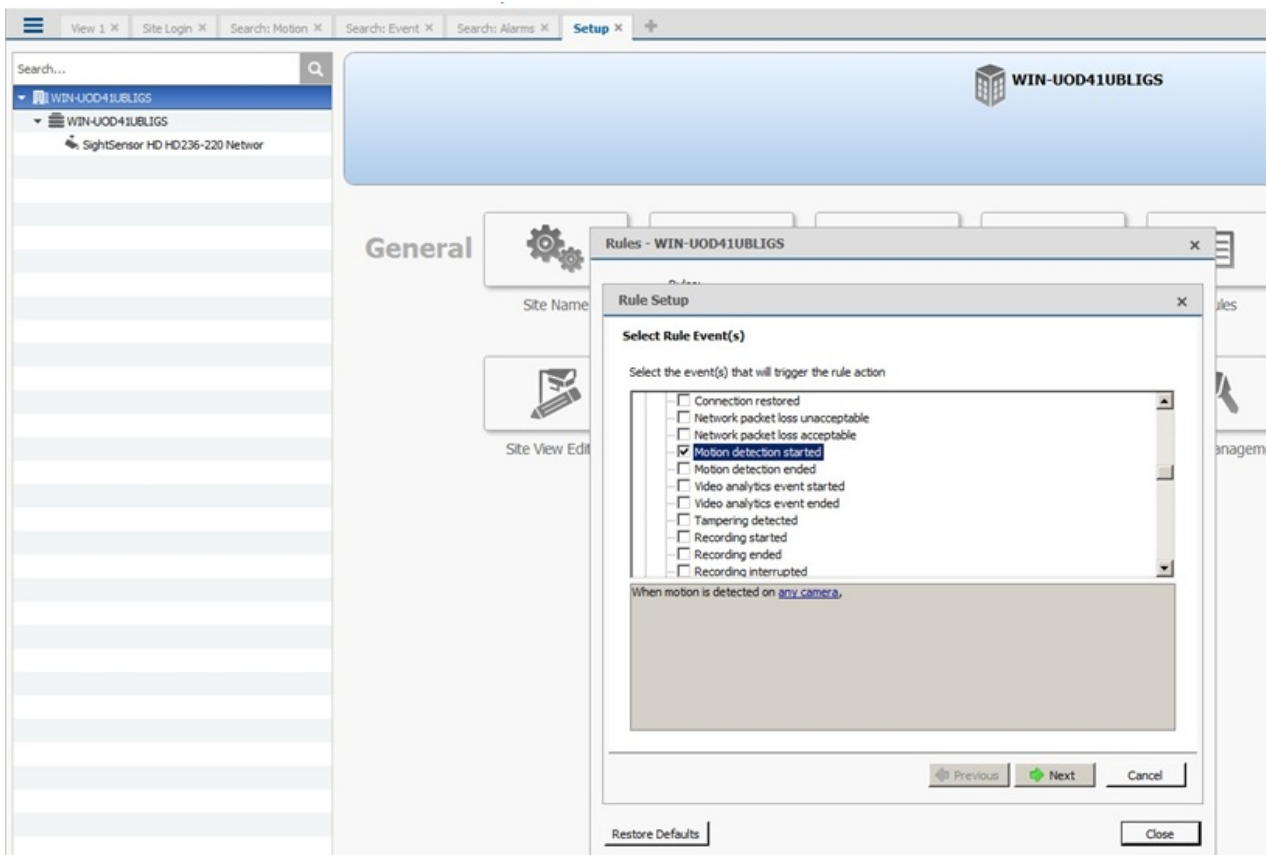
Setting Rules

After you've added alarm settings, you may add rules to perform an action (e.g. add Bookmark) when an alarm triggers.

- From the Setup window, click Rules



- Select *Motion detection started*, then *Next*.



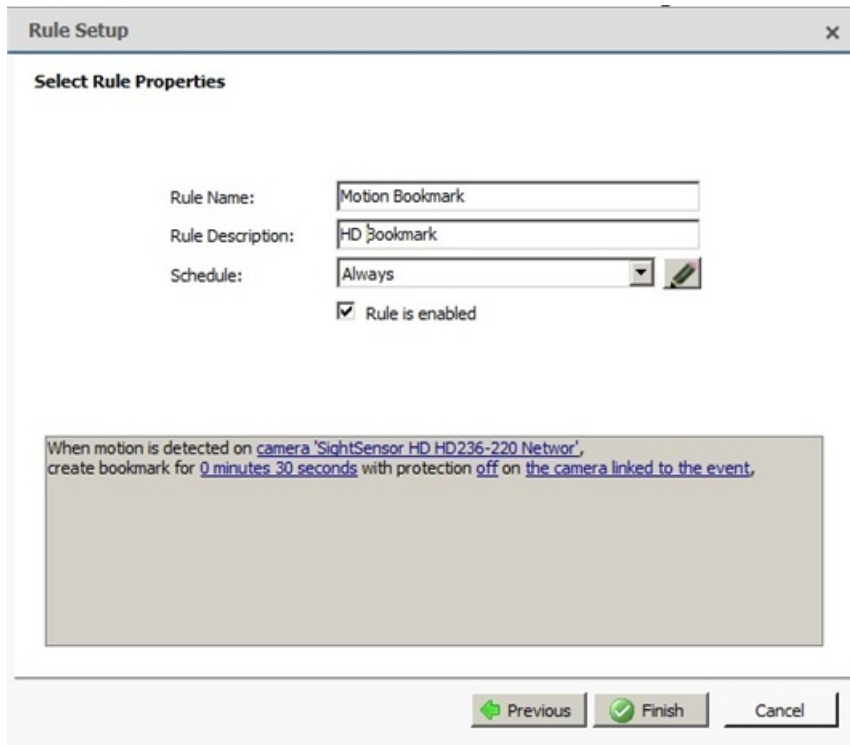
- Select *Create Bookmark* as the action.
- Click "any camera" to select the SightLogix device.

The screenshot shows the 'Rule Setup' dialog box with the 'Select Rule Action(s)' step. The dialog has a title bar with a close button (X). Below the title bar, the text 'Select Rule Action(s)' is displayed. Underneath, it says 'Select the action(s) for the rule'. A list of actions is shown in a scrollable area, grouped into two categories: 'User Notification Actions' and 'Monitoring Actions'. Under 'User Notification Actions', there are four options: 'Display on-screen message', 'Send email', 'Send notification to Central Monitoring Station', and 'Play a sound'. Under 'Monitoring Actions', there are five options: 'Start live streaming', 'Create Bookmark' (which is checked), 'Open a saved view', 'Start live streaming on a virtual matrix monitor', and 'Open a map on a virtual matrix monitor'. Below the list, a preview text reads: 'When motion is detected on any camera, create bookmark for 0 minutes 30 seconds with protection off on the camera linked to the event,'. At the bottom of the dialog, there are three buttons: 'Previous' (disabled), 'Next' (active), and 'Cancel'.

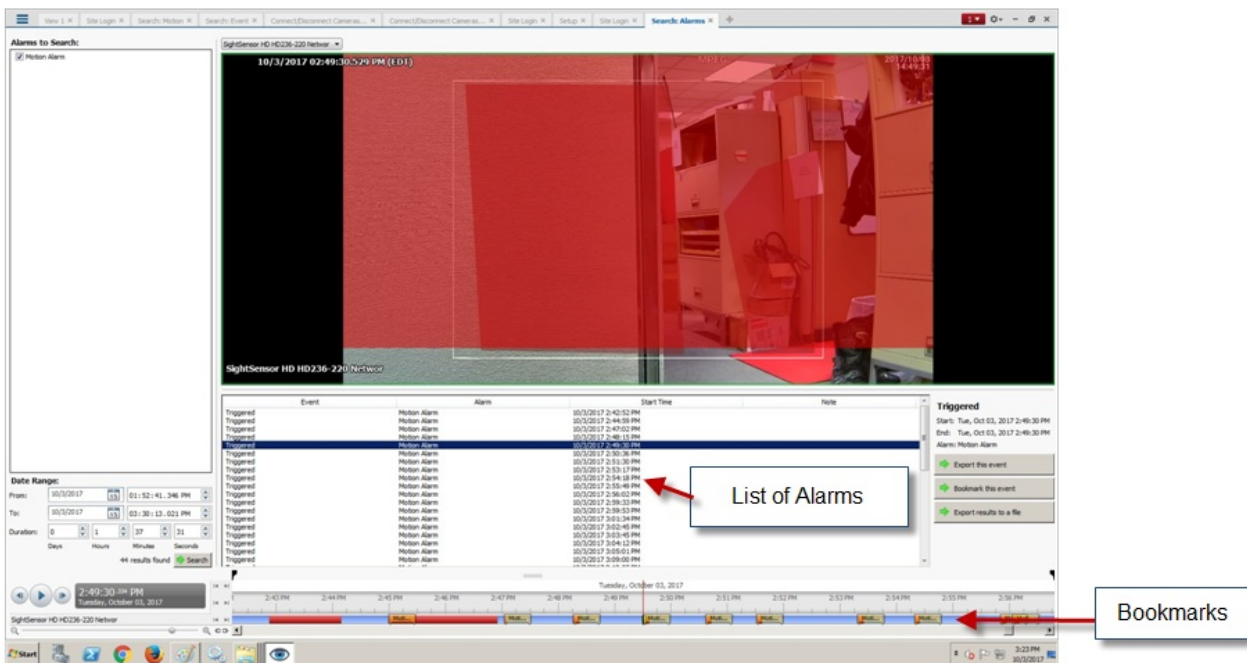
- Click Next.
- Review your rule setup at the bottom of the window and click Next.

The screenshot shows the 'Rule Setup' dialog box with the 'Select Rule Condition(s)' step. The dialog has a title bar with a close button (X). Below the title bar, the text 'Select Rule Condition(s)' is displayed. Underneath, it says 'Select the condition(s) to be met for this rule to run'. A list of conditions is shown in a scrollable area, grouped into one category: 'Device Events'. Under 'Device Events', there are two options: 'Digital input is active' and 'Digital input is not active'. Below the list, a preview text reads: 'When motion is detected on camera 'SightSensor HD HD236-220 Networ', create bookmark for 0 minutes 30 seconds with protection off on the camera linked to the event,'. At the bottom of the dialog, there are three buttons: 'Previous' (disabled), 'Next' (active), and 'Cancel'.

- Provide a name and click *Finish*.

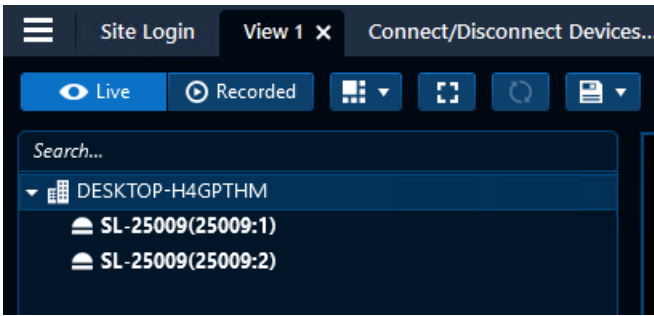


- Check the alarms under Search Alarms/Motion/Events

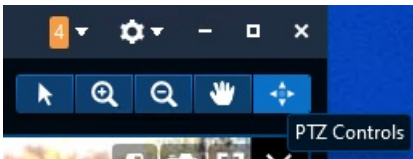


Adding SightTracker PTZ to Avigilon

For PTZ's, there are 2 streams and the device tree will display PTZ icons:



- Select the “PTZ Controls” button to enable movement control on the video.



- Drag the live video screen to pan and tilt the camera
- Use the mouse scroll to zoom in and out

