

## Configuring Avigilon Control Center 7

Last Modified on 11/22/2019 3:44 pm EST

Tested with Avigilon Control Center 7.2.0.18

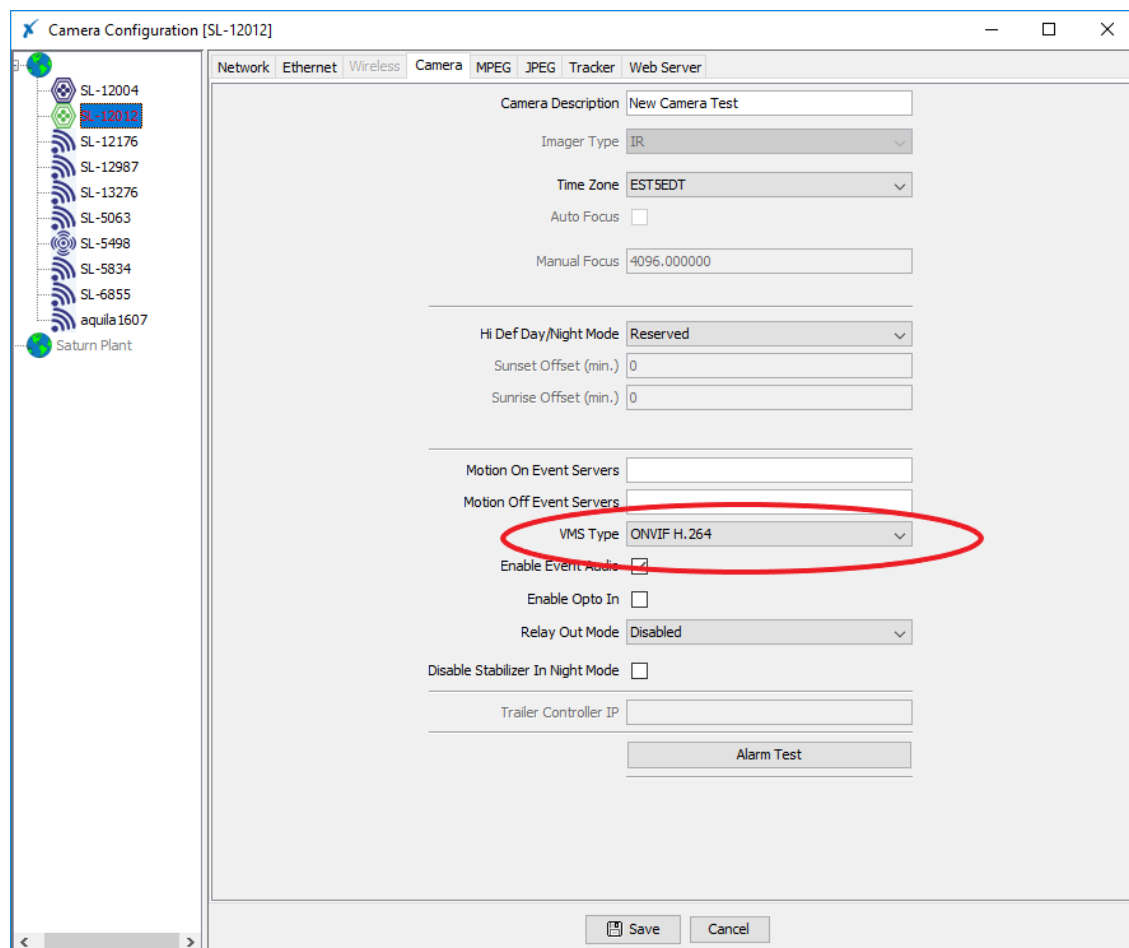
Tested with SightLogix Firmware 15.12.7

## Add SightLogix Devices as an ONVIF Device

### Adding Devices with SightMonitor

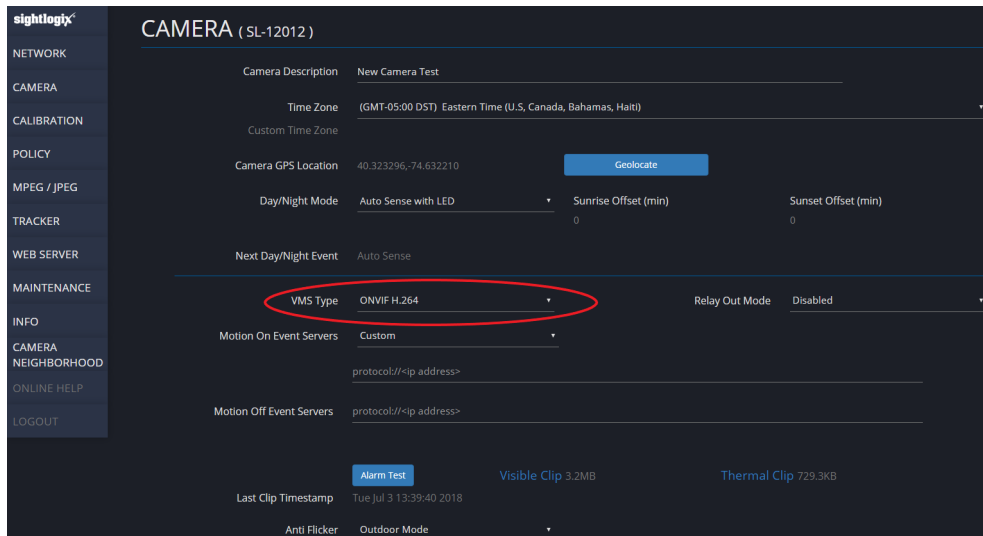
If you are using SightMonitor, follow these steps. If you are using WebConfig, scroll to the next section

- In SightMonitor, right-click your device, click Configure, choose the Camera tab, and set the VMS Type to either ONVIF H.264 (preferred) or ONVIF MPEG4.
  - Select VMS Type None if the device is an AXIS camera.



### Adding Devices with WebConfig

- In WebConfig, go to the Camera tab and set VMS Type to either ONVIF H.264 (preferred) or ONVIF MPEG4.
  - Select VMS Type None if the device is an AXIS camera.



**CAMERA ( SL-12012 )**

Camera Description: New Camera Test

Time Zone: (GMT-05:00 DST) Eastern Time (U.S., Canada, Bahamas, Haiti)

Custom Time Zone

Camera GPS Location: 40.323296,-74.632210 [Geolocate](#)

Day/Night Mode: Auto Sense with LED Sunrise Offset (min): 0 Sunset Offset (min): 0

Next Day/Night Event: Auto Sense

**VMS Type: ONVIF H.264** Relay Out Mode: Disabled

Motion On Event Servers: Custom

protocol://<ip address>

Motion Off Event Servers: protocol://<ip address>

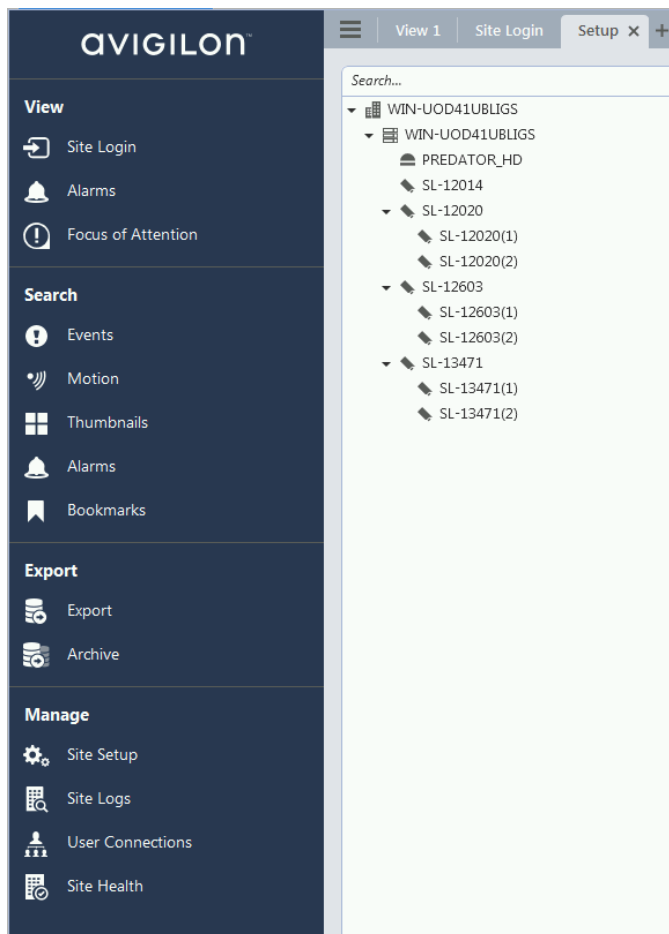
[Alarm Test](#) Visible Clip 3.2MB Thermal Clip 729.3KB

Last Clip Timestamp: Tue Jul 3 13:39:40 2018

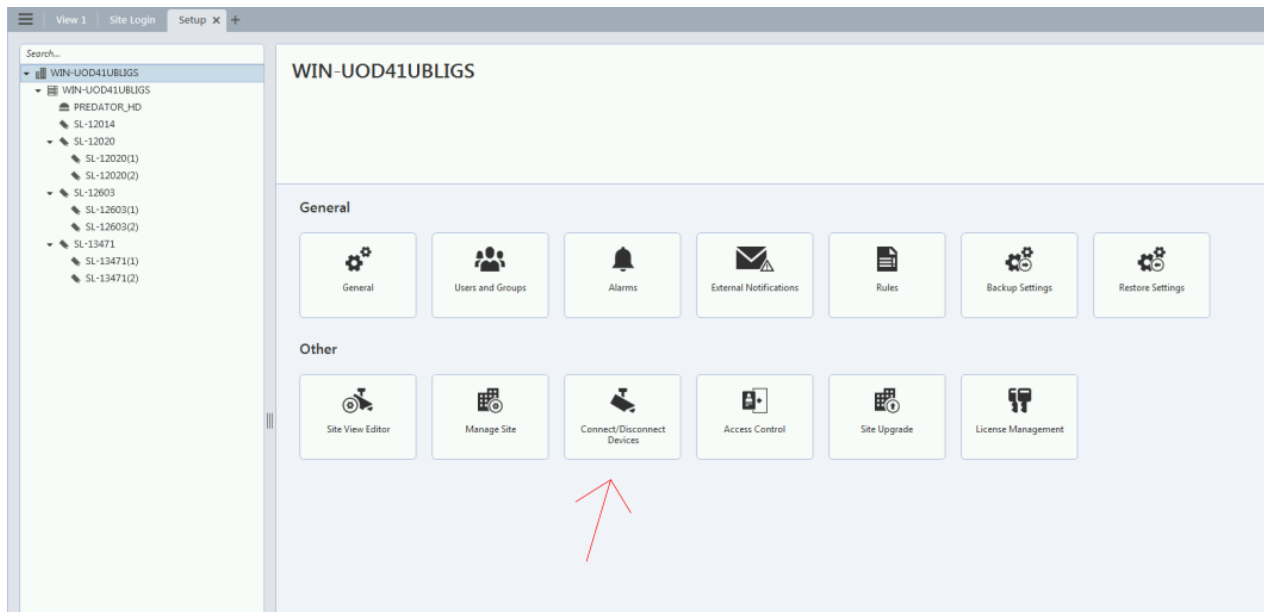
Anti Flicker: Outdoor Mode

Next, add devices individually as hardware units.

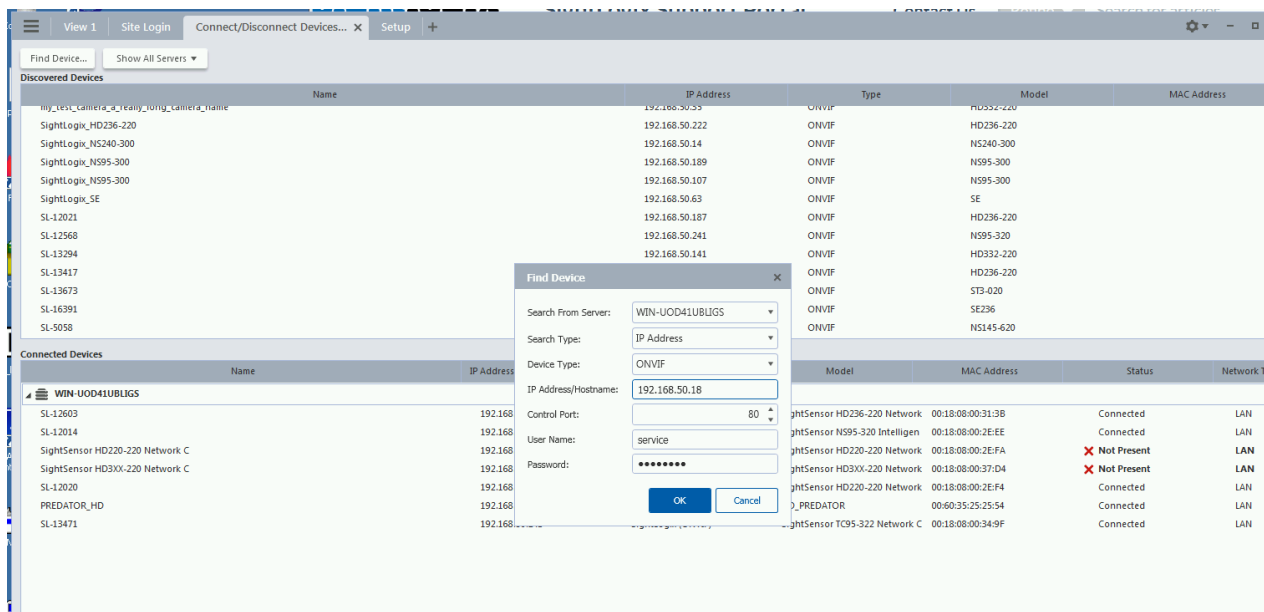
- Log into Avigilon Control Center, click the upper left menu icon (three bars) and select Site Setup from Manage section in the left-side navigation.



- Select your site and click Connect/Disconnect Devices.



- Look for your camera in the “Discovered Devices” interface.
- Click Find Device if your camera is not found and enter the SightLogix camera’s information in the Find Camera window and click OK.
  - Camera type is ONVIF.
  - Username/password is service/test1234



- Select your camera, click ‘Connect...’ and Press OK.



Find Device... Show All Servers ▾

Discovered Devices

Name	IP Address	Type	Model	MAC Address
SightLogix_HD236-220	192.168.50.222	ONVIF	HD236-220	
SightLogix_NS240-300	192.168.50.14	ONVIF	NS240-300	
SightLogix_NS95-300	192.168.50.107	ONVIF	NS95-300	
SightLogix_SE	192.168.50.63	ONVIF	SE	
SL-12010	192.168.50.155	ONVIF	ST3-020	
SL-12014	192.168.50.147	SightLogix (ONVIF)	SightSensor NS95-320 Intelligen	00:18:08:00:2E:EE
SL-12035	192.168.50.115	ONVIF	ST3-020	
SL-12603	192.168.50.18	SightLogix (ONVIF)	SightSensor HD236-220 Network C	00:18:08:00:31:3B
SL-13417			HD236-220	
SL-13673			ST3-020	
SL-15663			NS100-620	
SNP-6320RH			SNP-6320RH	

Connected Devices

WIN-UOD41UBUGS

Name	IP Address	Type	Model	MAC Address	Status	Network Type
PREDATOR_HD	192.168.50.222	ONVIF	HD236-220	00:60:35:25:25:54	Connected	LAN
SL-12014	192.168.50.14	ONVIF	NS240-300	00:18:08:00:2E:EE	Connected	LAN
SL-12020	192.168.50.107	ONVIF	NS95-300	00:18:08:00:2E:FA	Connected	LAN
SL-13471	192.168.50.147	SightLogix (ONVIF)	SightSensor NS95-320 Intelligen	00:18:08:00:34:9F	Connected	LAN
SightSensor HD220-220 Network C	192.168.50.157	SightLogix (ONVIF)	SightSensor HD220-220 Network C	00:18:08:00:2E:FA	Not Present	LAN
SightSensor HD3XX-220 Network C	192.168.50.177	SightLogix (ONVIF)	SightSensor HD3XX-220 Network C	00:18:08:00:37:04	Not Present	LAN

Connect Device

Properties

Connect to: WIN-UOD41UBUGS

Connection Type: Primary

Device Control: Unsecure

Network Type: LAN

Click to view location

OK Cancel

SL-12603  
SightSensor HD236-220 Network C

Firmware Version: 15.12.98M  
IP Address: 192.168.50.18  
MAC Address: 00:18:08:00:31:3B

Device is Disconnected  
This device is not connected to a server. Any events or images are not being recorded.

Connect... Replace...

- Once connected, the camera will be shown at the bottom under Connected Cameras.

View 1 Site Login Connect/Disconnect Devices... +

Find Device... Show All Servers ▾

Discovered Devices

Name	IP Address	Type	Model	MAC Address
SightLogix_HD236-220	192.168.50.222	ONVIF	HD236-220	
SightLogix_NS240-300	192.168.50.14	ONVIF	NS240-300	
SightLogix_NS95-300	192.168.50.107	ONVIF	NS95-300	
SightLogix_SE	192.168.50.63	ONVIF	SE	
SL-12010	192.168.50.155	ONVIF	ST3-020	
SL-12014	192.168.50.147	SightLogix (ONVIF)	SightSensor NS95-320 Intelligen	00:18:08:00:2E:EE
SL-12020	192.168.50.107	ONVIF	NS95-300	
SL-12035	192.168.50.115	ONVIF	ST3-020	
SL-13417	192.168.50.147	SightLogix (ONVIF)	SightSensor NS95-320 Intelligen	00:18:08:00:2E:EE
SL-13673	192.168.50.147	SightLogix (ONVIF)	SightSensor NS95-320 Intelligen	00:18:08:00:2E:EE
SL-15663	192.168.50.147	SightLogix (ONVIF)	SightSensor NS95-320 Intelligen	00:18:08:00:2E:EE
SL-16391	192.168.50.147	SightLogix (ONVIF)	SightSensor NS95-320 Intelligen	00:18:08:00:2E:EE
SL-5058	192.168.50.147	SightLogix (ONVIF)	SightSensor NS95-320 Intelligen	00:18:08:00:2E:EE

Connected Devices

WIN-UOD41UBUGS

Name	IP Address	Type	Model	MAC Address	Status	Network Type
SL-12603	192.168.50.18	SightLogix (ONVIF)	SightSensor HD236-220 Network C	00:18:08:00:31:3B	Connected	LAN
SL-12014	192.168.50.147	SightLogix (ONVIF)	SightSensor NS95-320 Intelligen	00:18:08:00:2E:EE	Connected	LAN
SightSensor HD220-220 Network C	192.168.50.157	SightLogix (ONVIF)	SightSensor HD220-220 Network C	00:18:08:00:2E:FA	Not Present	LAN
SightSensor HD3XX-220 Network C	192.168.50.177	SightLogix (ONVIF)	SightSensor HD3XX-220 Network C	00:18:08:00:37:04	Not Present	LAN
SL-12030	192.168.50.185	SightLogix (ONVIF)	SightSensor HD220-220 Network C	00:18:08:00:2E:FA	Connected	LAN
PREDATOR_HD	192.168.50.215	360Vision (ONVIF)	HD_PREDATOR	00:60:35:25:25:54	Connected	LAN
SL-13471	192.168.50.243	SightLogix (ONVIF)	SightSensor TC95-322 Network C	00:18:08:00:34:9F	Connected	LAN

SL-12603  
SightLogix (ONVIF) SightSensor HD236-220 Network C

Firmware Version: 15.12.98M  
IP Address: 192.168.50.18  
MAC Address: 00:18:08:00:31:3B

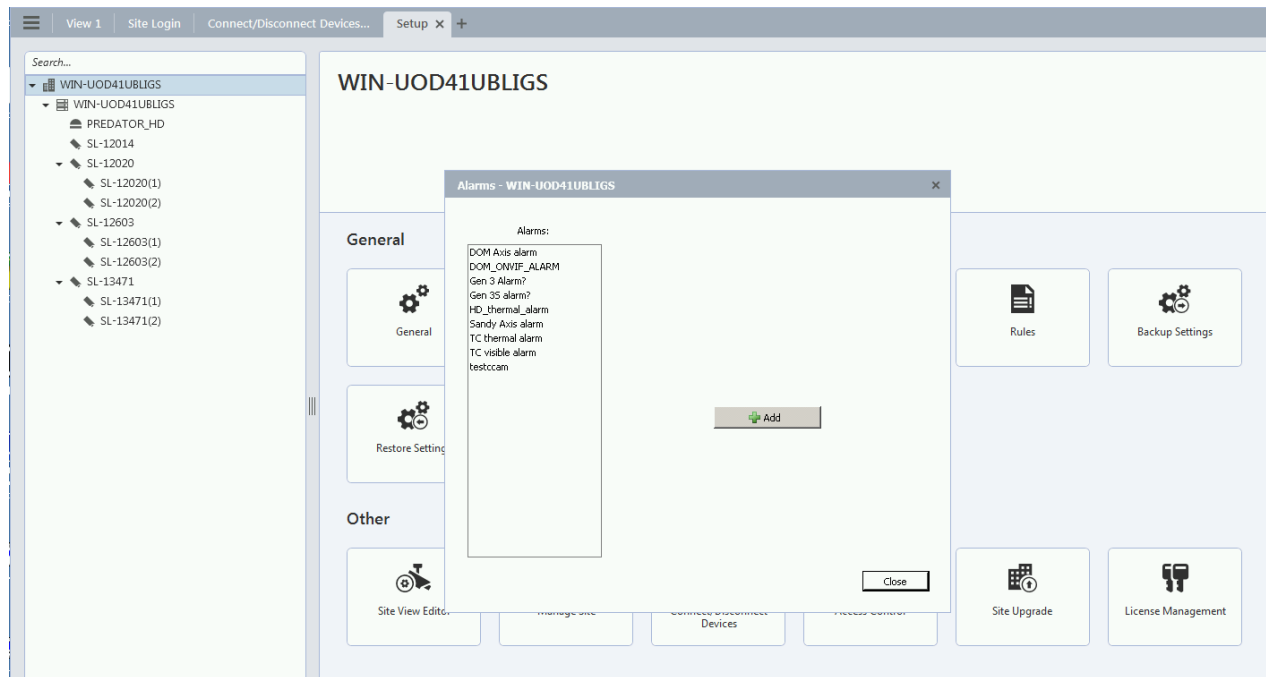
Connected to server WIN-UOD41UBUGS

Disconnect Edit...

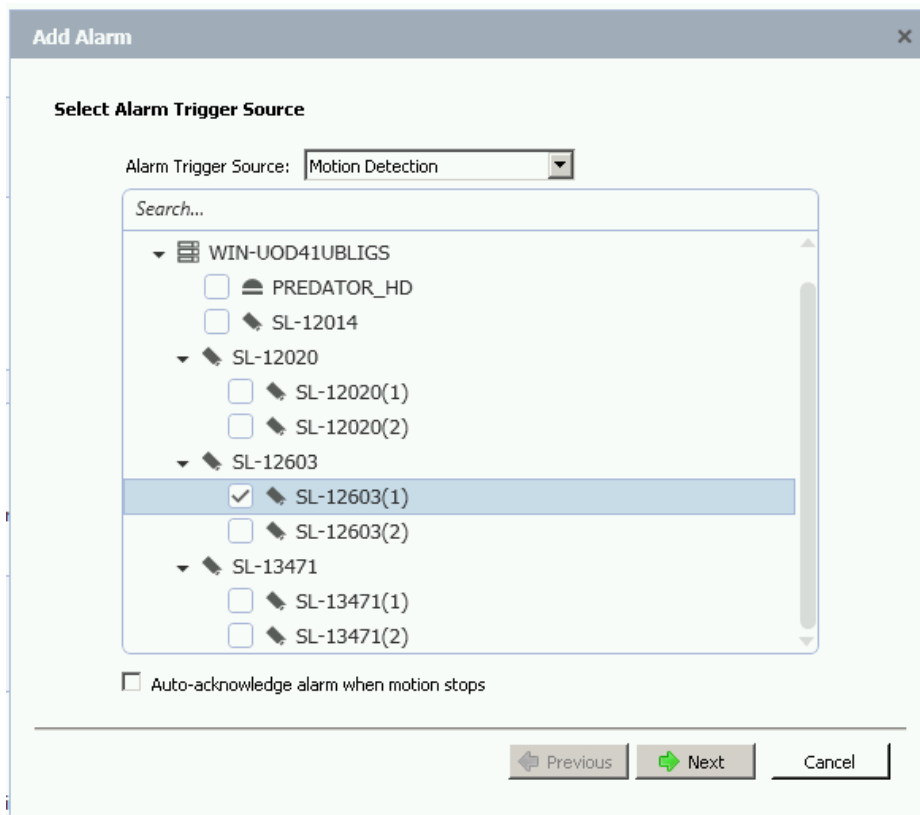
## Setting Alarms

Once you've added cameras, create and configure alarms as follows:

- Under the setup menu, click *Alarms* and click *Add*.



- Select *Motion Detection* under Alarm Trigger Source.
- Select the camera which you want to associate with this alarm.
- Click Next.



- Select the camera again to link the alarm to your camera and then click Next.

Add Alarm

Select Linked Devices

Select the device(s) to link to this alarm:

Search...

☐ SL-12014

☒ SL-12020

☐ SL-12020(1)

☐ SL-12020(2)

☒ SL-12603

☒ SL-12603(1)

☐ SL-12603(2)

☐ SL-13471

☐ SL-13471(1)

☐ SL-13471(2)

Pre-Alarm Record Time: 5 seconds

Recording Duration: 1 min 0 sec

☐ View linked devices when alarm is triggered

Previous

Next

Cancel

- Add the group/user to receive the alarm notification.
- Click 'Next'

Add Alarm

Select Alarm Recipients

Select the users that will be notified when this alarm is triggered:

User/Group	First Name	Last Name	Wait Time
Administrators			0 h 0 m

Add Recipients...

Remove Recipients

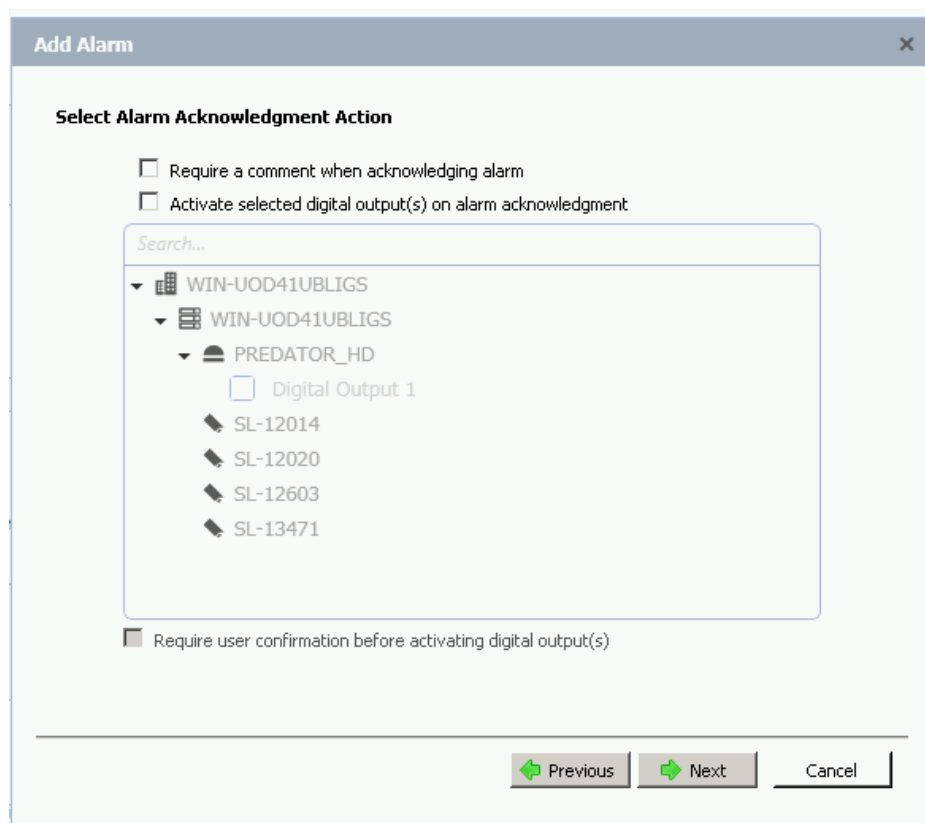
☐ Play sound when alarm is triggered: Alarm 1.wav

Previous

Next

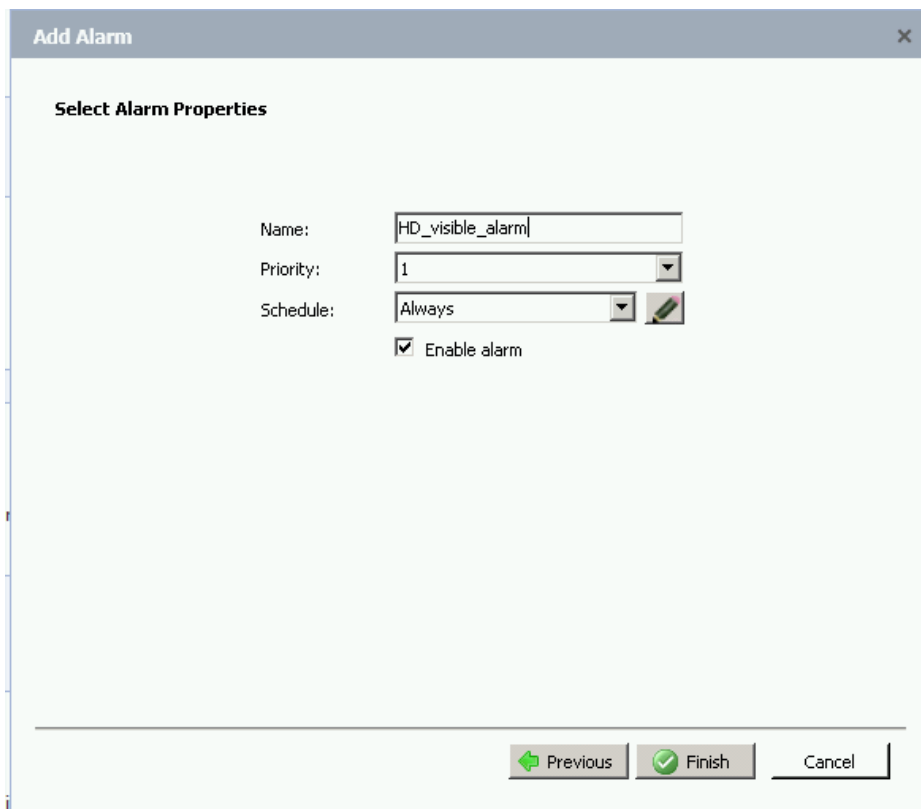
Cancel

- Click 'Next' on alarm acknowledgement action.



The screenshot shows a software window titled "Add Alarm" with a close button (X) in the top right corner. Inside the window, the section "Select Alarm Acknowledgment Action" contains two unchecked checkboxes: "Require a comment when acknowledging alarm" and "Activate selected digital output(s) on alarm acknowledgment". Below these is a search box labeled "Search...". Under the search box, a tree view shows a hierarchy: "WIN-UOD41UBLIGS" (expanded) contains "WIN-UOD41UBLIGS" (expanded), which contains "PREDATOR\_HD" (expanded). Under "PREDATOR\_HD", there is a checked checkbox for "Digital Output 1" and a list of four items: "SL-12014", "SL-12020", "SL-12603", and "SL-13471". Below the tree view is a checked checkbox labeled "Require user confirmation before activating digital output(s)". At the bottom of the window, there are three buttons: "Previous" (with a left arrow), "Next" (with a right arrow), and "Cancel".

- Provide alarm name.
- Click Finish.




**Add Alarm**




**Select Alarm Properties**

Name:

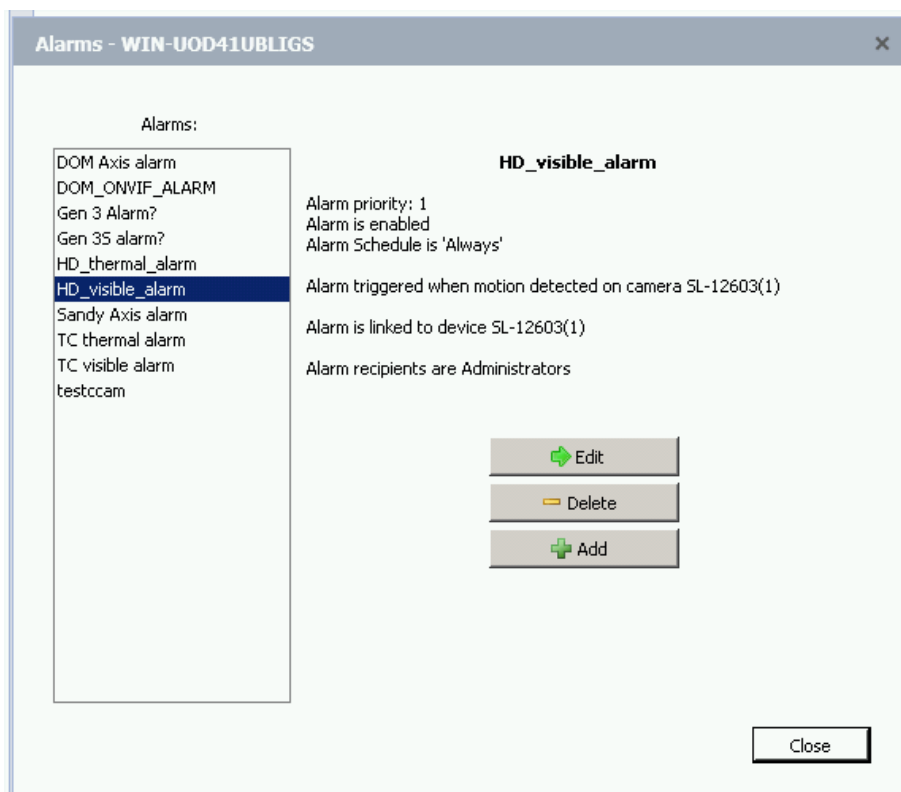
Priority:

Schedule:  

☒ Enable alarm

 Previous  Finish  Cancel

After adding the alarm, the Alarm properties should look as follows:



**Alarms - WIN-UOD41UBLIGS**

**Alarms:**

- DOM Axis alarm
- DOM\_ONVIF\_ALARM
- Gen 3 Alarm?
- Gen 35 alarm?
- HD\_thermal\_alarm
- HD\_visible\_alarm**
- Sandy Axis alarm
- TC thermal alarm
- TC visible alarm
- testccam




**HD\_visible\_alarm**

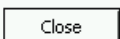
Alarm priority: 1  
Alarm is enabled  
Alarm Schedule is 'Always'

Alarm triggered when motion detected on camera SL-12603(1)

Alarm is linked to device SL-12603(1)

Alarm recipients are Administrators

 Edit  
 Delete  
 Add

 Close

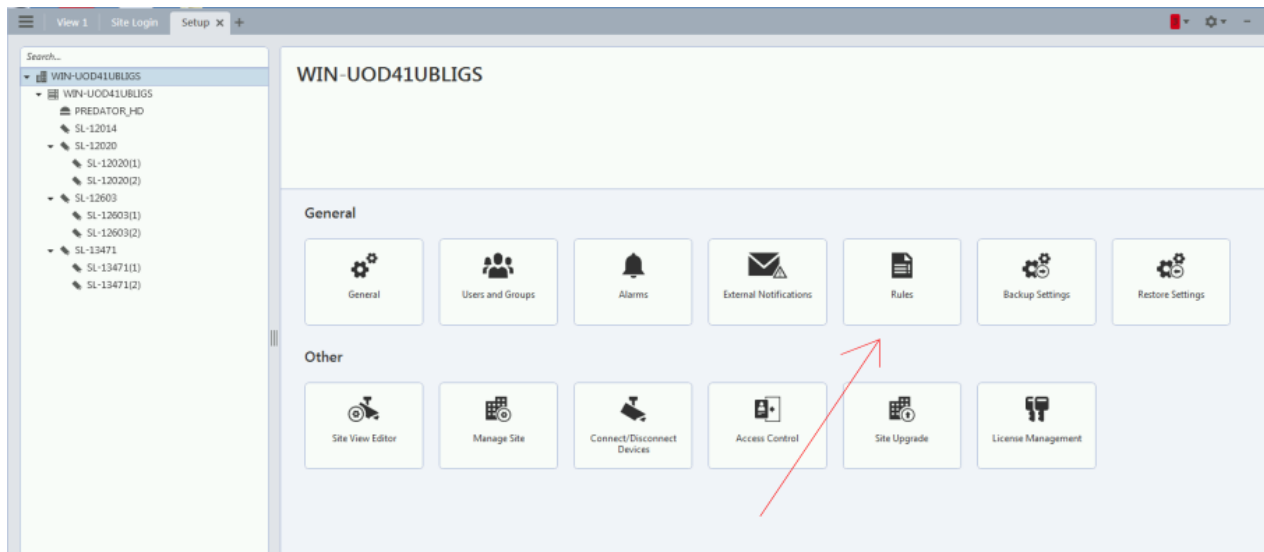
## Setting Rules

After you've added alarm settings, you may add rules to perform an action (e.g. add Bookmark) when an alarm

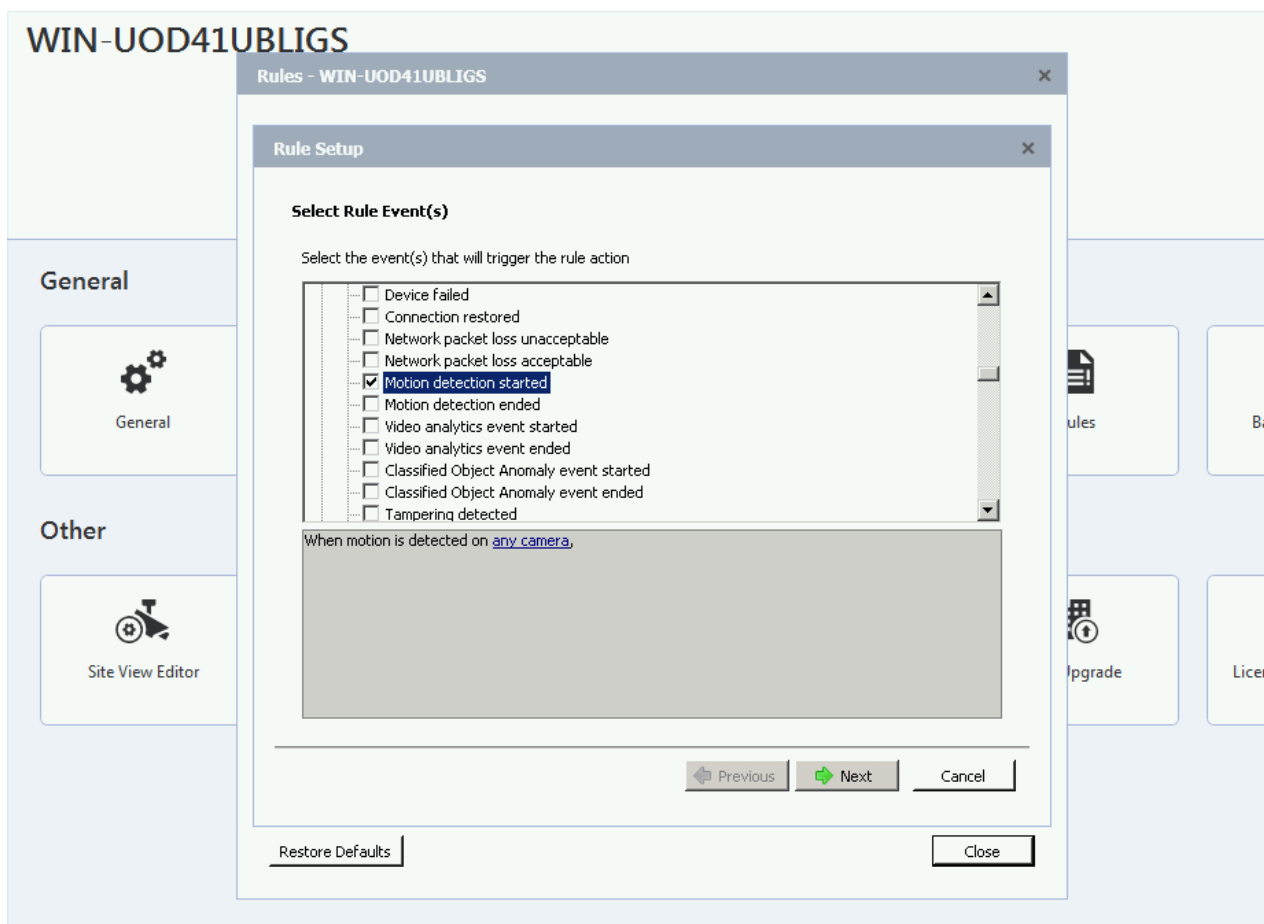


triggers.

- From the Setup window, click Rules



- Select *Motion detection started*, then *Next*.



- Select *Create Bookmark* as the action.
- Click "any camera" to select the SightLogix device.

Rule Setup

Select Rule Action(s)

Select the action(s) for the rule

☐ Play a sound

☒ Monitoring Actions
 

☐ Start live streaming
 ☐ Video intercom call
 ☐ Focus of Attention
 ☒ Create Bookmark
 ☐ Open a saved view
 ☐ Start live streaming on a virtual matrix monitor
 ☐ Open a map on a virtual matrix monitor
 ☐ Open a web page on a virtual matrix monitor

☐ Device Actions

When motion is detected on [any camera](#),  
 create bookmark for [0 minutes 30 seconds](#) with protection [off](#) on [the camera linked to the event](#),

Previous

Next

Cancel

- Click Next.
- Review your rule setup at the bottom of the window and click Next.

Rule Setup

Select Rule Condition(s)

Select the condition(s) to be met for this rule to run

☒ Device Events
 

☐ Digital input is active
 ☐ Digital input is not active

When motion is detected on camera '[SL-12603\(1\)](#)',  
 create bookmark for [0 minutes 30 seconds](#) with protection [off](#) on [the camera linked to the event](#),

Previous

Next

Cancel

- Provide a name and click *Finish*.

Rule Setup

Select Rule Properties

Rule Name:

HD rule bookmark

Rule Description:

HD bookmark

Schedule:

Always

☒ Rule is enabled

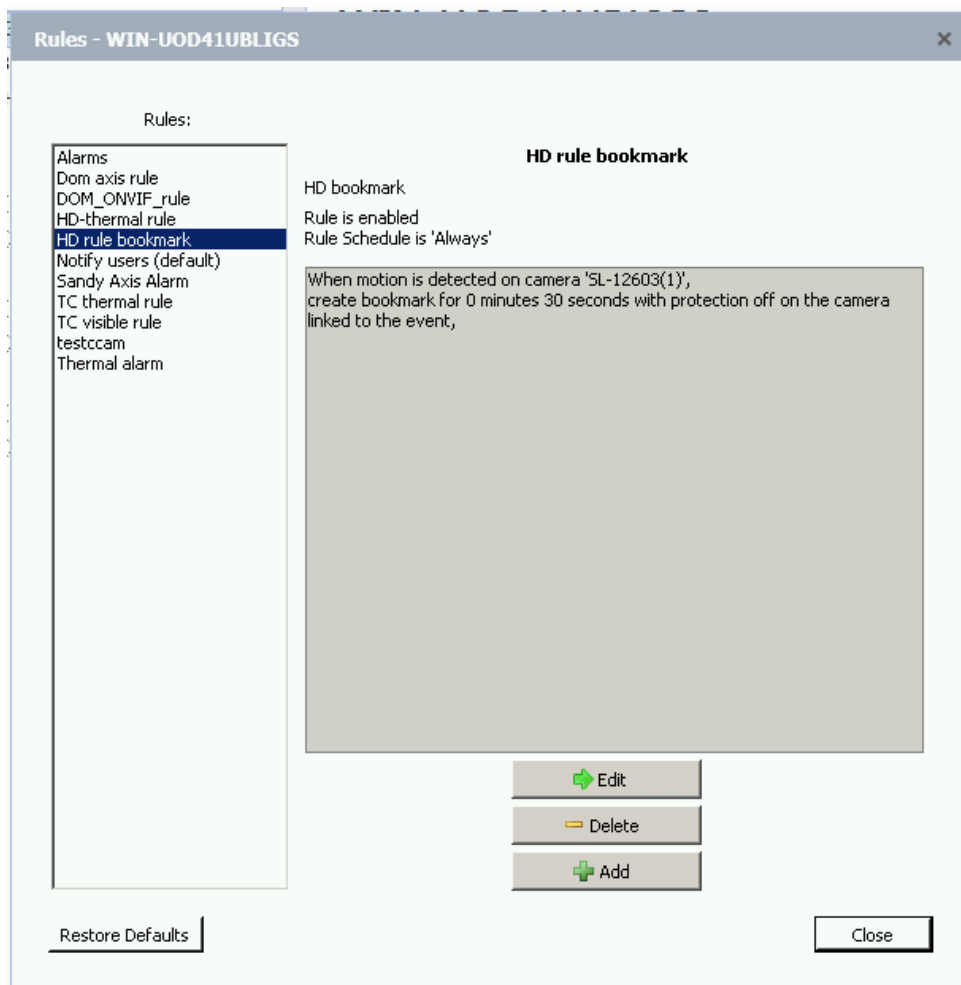
When motion is detected on [camera 'SL-12603\(1\)'](#),  
create bookmark for [0 minutes 30 seconds](#) with protection [off](#) on [the camera linked to the event](#).

Previous

Finish

Cancel

- Check rule description



- Check the alarms under Search -> Alarms/Motion/Events

