

## Configuring Avigilon Control Center 6

Last Modified on 10/08/2019 8:49 am EDT

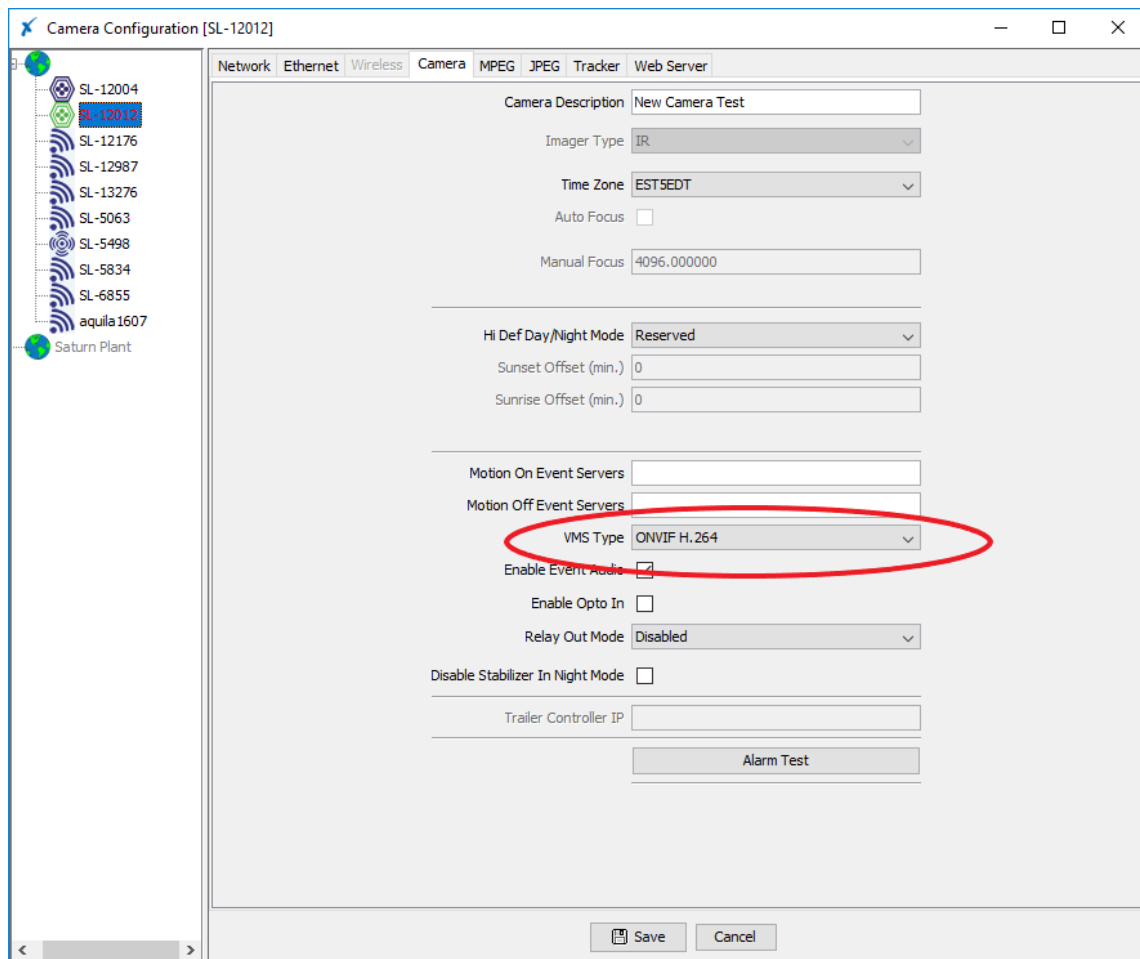
Tested with Avigilon Control Center 6.8.4.0  
Tested with SightLogix Firmware 10.10.29 and 15.11.87

## Add SightLogix Devices as an ONVIF Device

### Adding Devices with SightMonitor

If you are using SightMonitor, follow these steps. If you are using WebConfig, scroll to the next section

- In SightMonitor, right-click your device, click Configure, choose the Camera tab, and set the VMS Type to either ONVIF H.264 (preferred) or ONVIF MPEG4.



### Adding Devices with WebConfig

- In WebConfig, go to the Camera tab and set VMS Type to either ONVIF H.264 (preferred) or ONVIF MPEG4



**sightlogix**

NETWORK

CAMERA

CALIBRATION

POLICY

MPEG / JPEG

TRACKER

WEB SERVER

MAINTENANCE

INFO

CAMERA NEIGHBORHOOD

ONLINE HELP

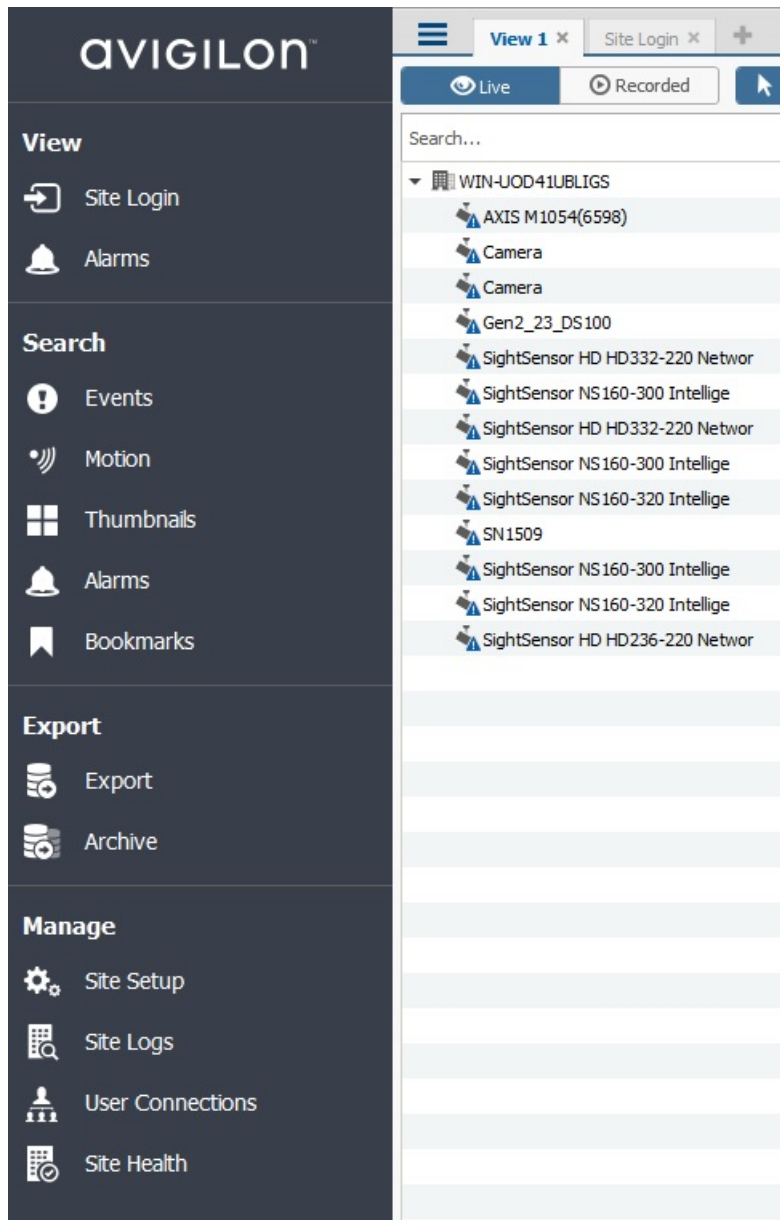
LOGOUT

### CAMERA ( SL-12012 )

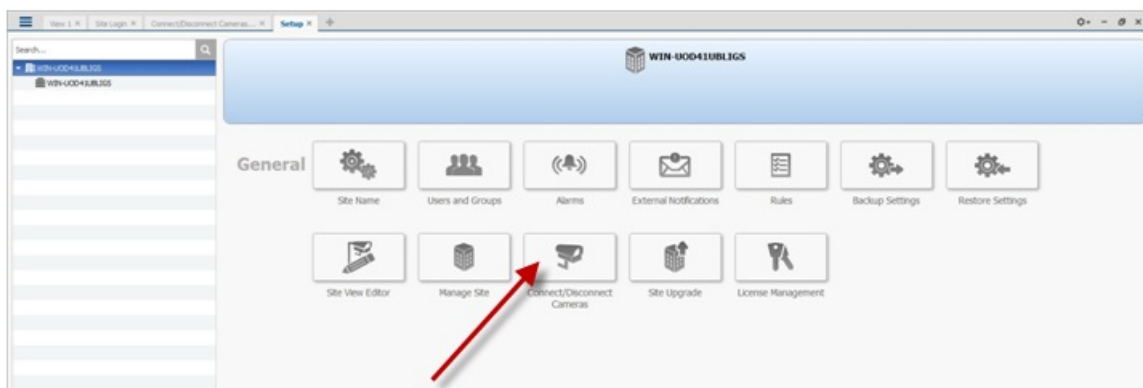
Camera Description	New Camera Test		
Time Zone	(GMT-05:00 DST) Eastern Time (U.S, Canada, Bahamas, Haiti) ▼		
Custom Time Zone			
Camera GPS Location	40.323296, -74.632210	<button>Geolocate</button>	
Day/Night Mode	Auto Sense with LED ▼	Sunrise Offset (min) 0	Sunset Offset (min) 0
Next Day/Night Event	Auto Sense		
VMS Type	ONVIF H.264 ▼	Relay Out Mode	Disabled ▼
Motion On Event Servers	Custom ▼		
	protocol://<ip address>		
Motion Off Event Servers	protocol://<ip address>		
	<button>Alarm Test</button>	Visible Clip 3.2MB	Thermal Clip 729.3KB
Last Clip Timestamp	Tue Jul 3 13:39:40 2018		
Anti Flicker	Outdoor Mode ▼		

Next, add devices individually as hardware units.

- Log into AvigilonControl Center , click the upper left menu icon (three bars) and select *Manage Site Setup* from the left-side navigation.

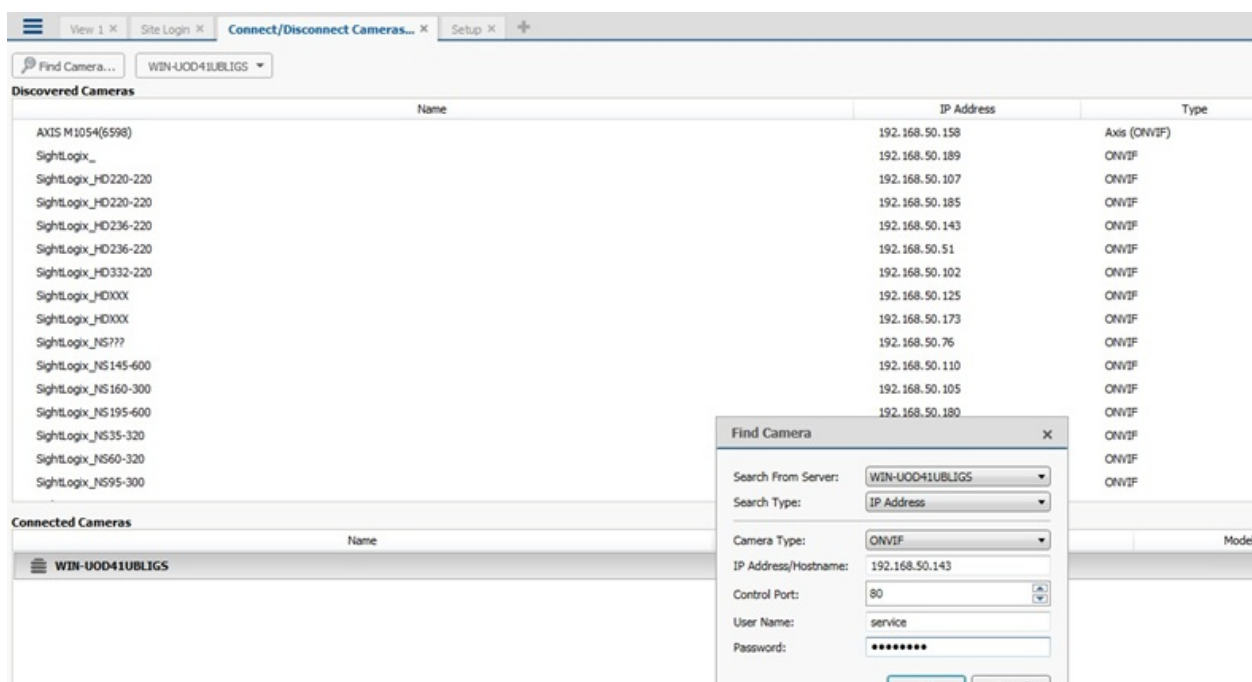


- Click Connect/Disconnect cameras.

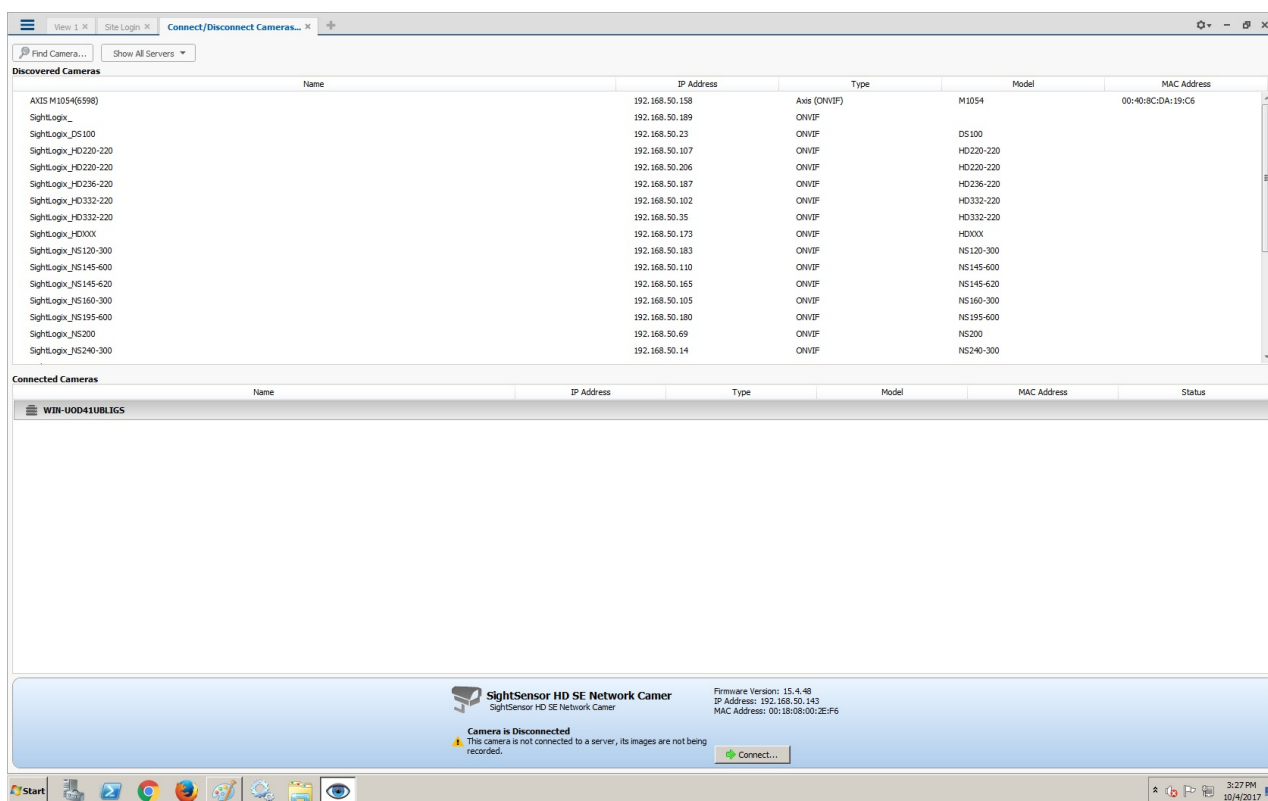


- Click Find Camera and enter the SightLogix camera's information in the Find Camera window and click OK.
  - Camera type is ONVIF.

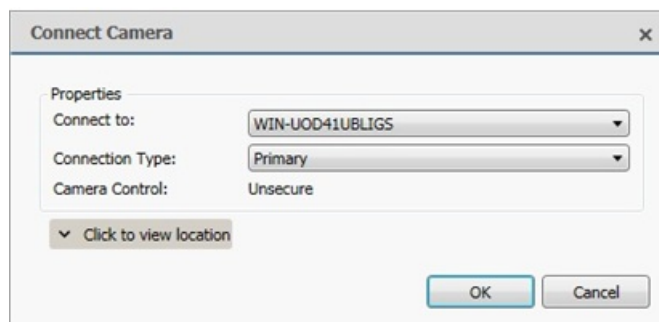
- Username/password is service/test1234



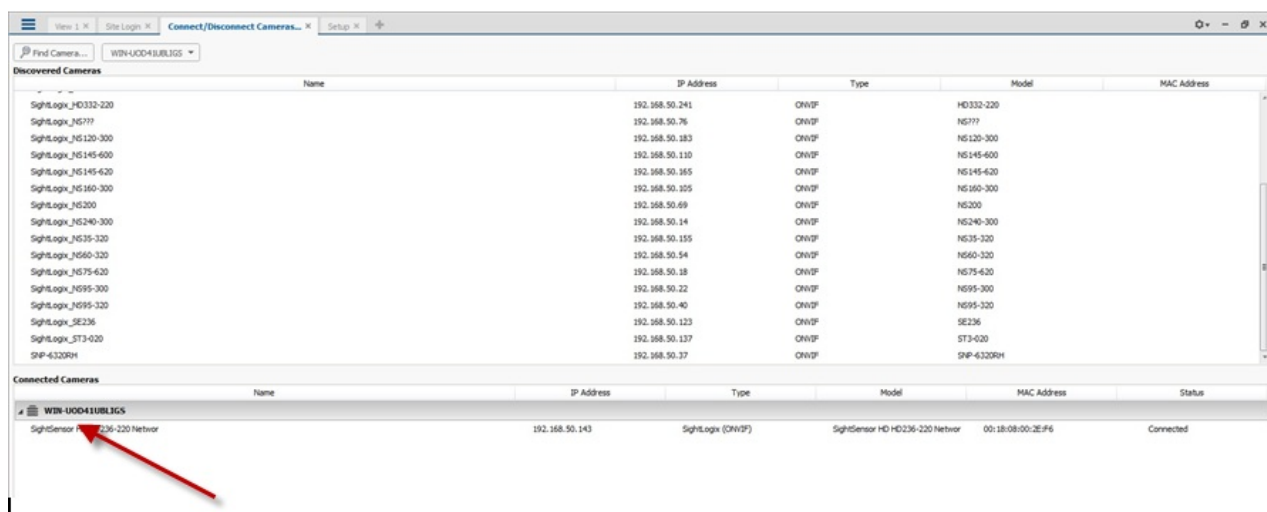
- Click OK. The following screen opens, showing the newly added camera at the bottom.



- Click Connect. The Connect Camera window opens.



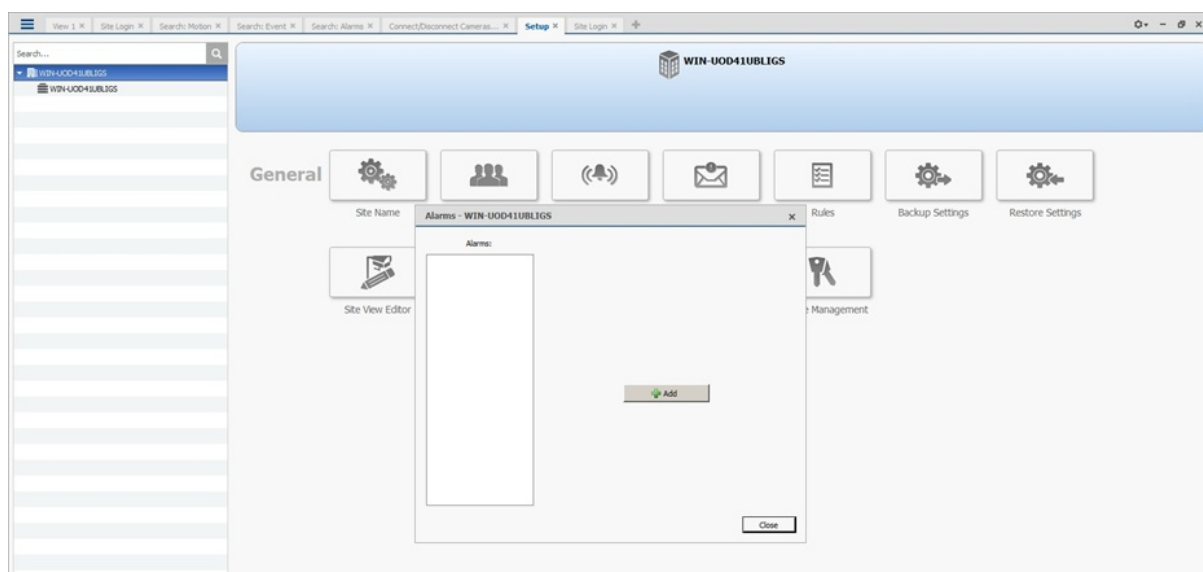
- Click OK.
- Once connected, the camera will be shown at the bottom under Connected Cameras.



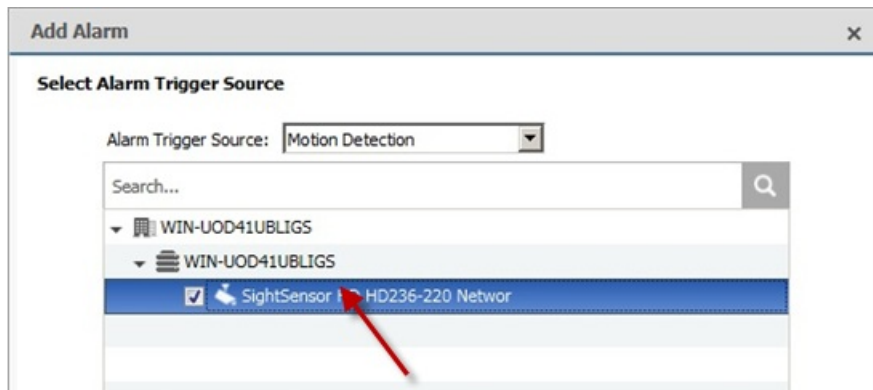
## Setting Alarms

Once you've added cameras, create and configure alarms as follows:

- Under the setup menu, click *Alarms* and click *Add*.



- Select *Motion Detection* under Alarm Trigger Source.
- Select the camera which you want to associate with this alarm.



**Add Alarm**

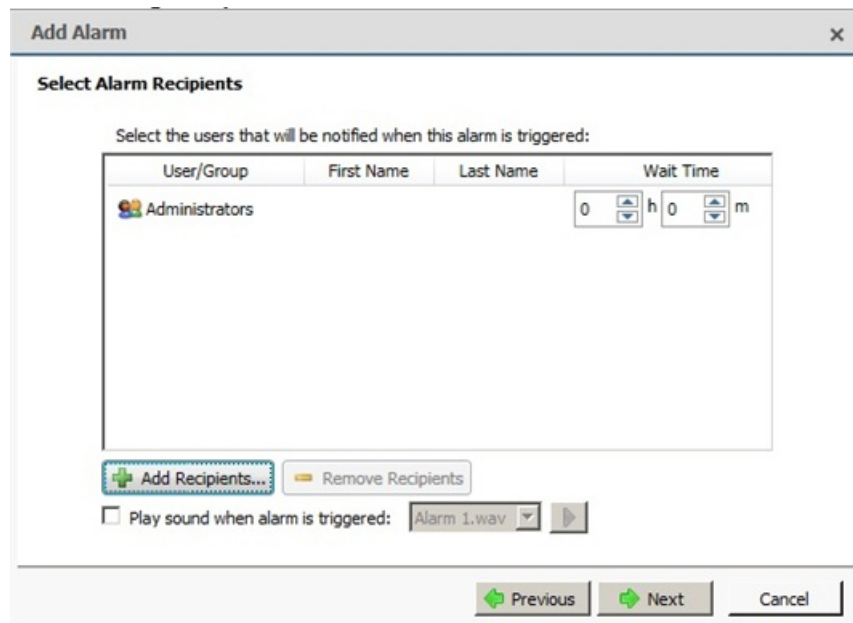
**Select Alarm Trigger Source**

Alarm Trigger Source: Motion Detection

Search...

- WIN-UOD41UBLIGS
- WIN-UOD41UBLIGS
- ☒ **SightSensor HD236-220 Network**

- Add the group/user to receive the alarm notification and click *Next*.



**Add Alarm**

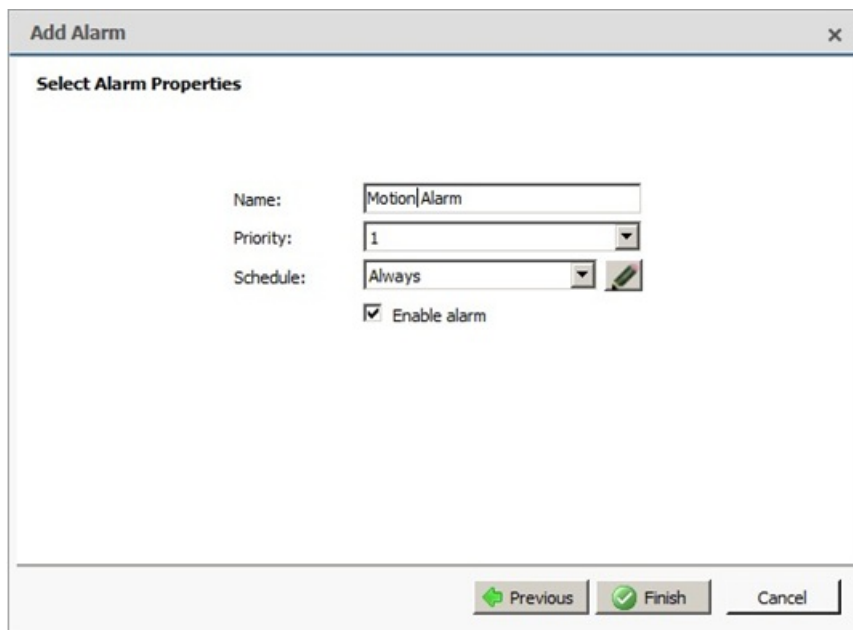
**Select Alarm Recipients**

Select the users that will be notified when this alarm is triggered:

User/Group	First Name	Last Name	Wait Time
Administrators			0 h 0 m

☐ Play sound when alarm is triggered: Alarm 1.wav

- Provide a name for the alarm and click *Finish*.




**Add Alarm** [X]



**Select Alarm Properties**

Name:

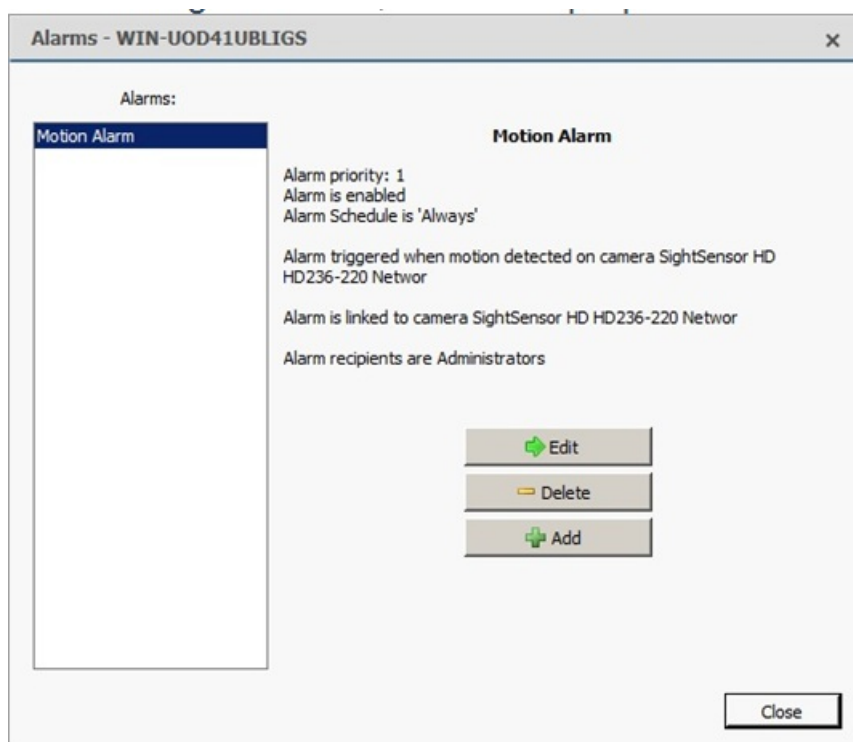
Priority:

Schedule:  

☒ Enable alarm

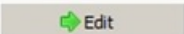
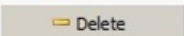

 Previous  Finish

- After adding the alarm, the Alarm properties should look as follows:



**Alarms - WIN-UOD41UBLIGS** [X]

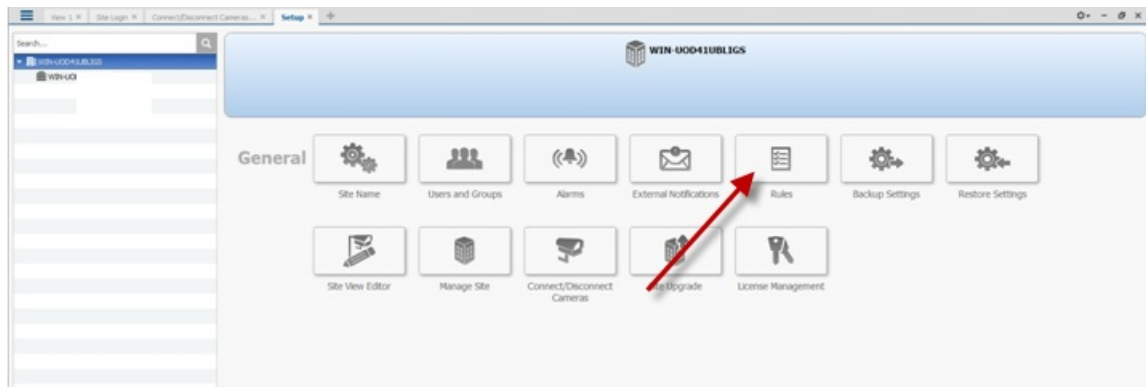
Alarms:

Motion Alarm
<p><b>Motion Alarm</b></p> <p>Alarm priority: 1 Alarm is enabled Alarm Schedule is 'Always'</p> <p>Alarm triggered when motion detected on camera SightSensor HD HD236-220 Networ</p> <p>Alarm is linked to camera SightSensor HD HD236-220 Networ</p> <p>Alarm recipients are Administrators</p> <p> Edit  Delete  Add</p>

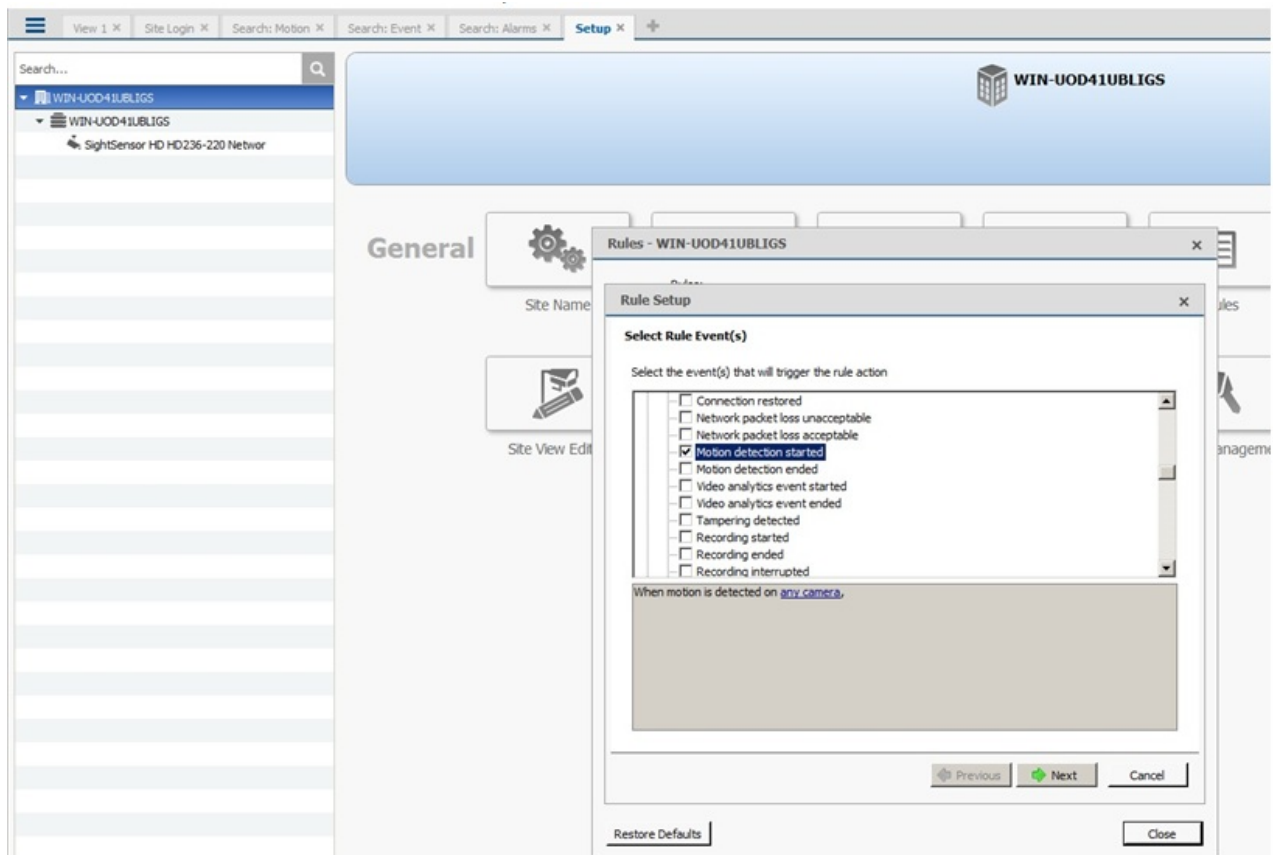
## Setting Rules

After you've added alarm settings, you may add rules to perform an action (e.g. add Bookmark) when an alarm triggers.

- From the Setup window, click Rules

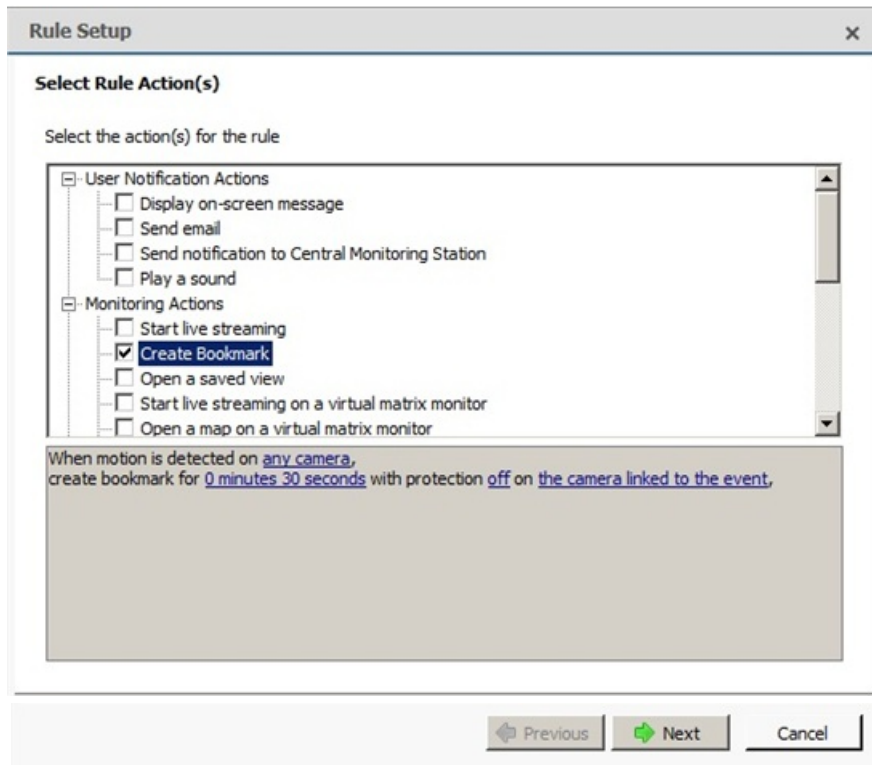


- Select *Motion detection started*, then *Next*.



- Select *Create Bookmark* as the action.
- Click "any camera" to select the SightLogix device.





**Rule Setup**

**Select Rule Action(s)**

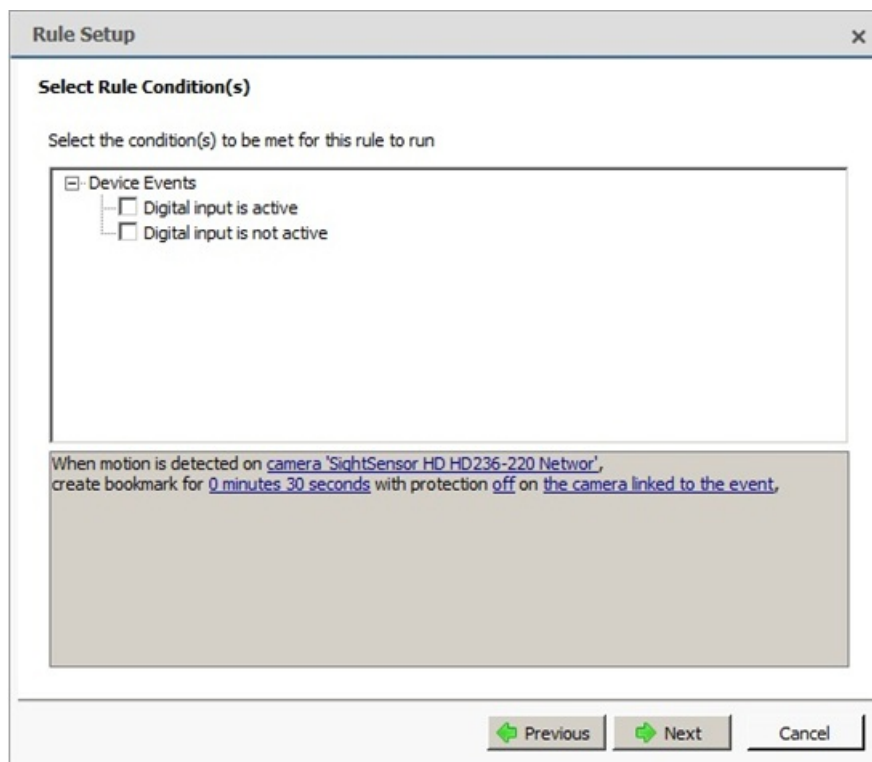
Select the action(s) for the rule

- ☐ User Notification Actions
  - ☐ Display on-screen message
  - ☐ Send email
  - ☐ Send notification to Central Monitoring Station
  - ☐ Play a sound
- ☒ Monitoring Actions
  - ☐ Start live streaming
  - ☒ Create Bookmark
  - ☐ Open a saved view
  - ☐ Start live streaming on a virtual matrix monitor
  - ☐ Open a map on a virtual matrix monitor

When motion is detected on any camera,  
create bookmark for 0 minutes 30 seconds with protection off on the camera linked to the event,

Previous Next Cancel

- Click Next.
- Review your rule setup at the bottom of the window and click Next.



**Rule Setup**

**Select Rule Condition(s)**

Select the condition(s) to be met for this rule to run

- ☒ Device Events
  - ☒ Digital input is active
  - ☐ Digital input is not active

When motion is detected on camera 'SightSensor HD HD236-220 Networ',  
create bookmark for 0 minutes 30 seconds with protection off on the camera linked to the event,

Previous Next Cancel

- Provide a name and click *Finish*.

Rule Setup

Select Rule Properties

Rule Name:

Motion Bookmark

Rule Description:

HD Bookmark

Schedule:

Always

☒ Rule is enabled

When motion is detected on camera 'SightSensor HD HD236-220 Networ', create bookmark for 0 minutes 30 seconds with protection off on the camera linked to the event,

Previous

Finish

Cancel

- Check the alarms under Search Alarms/Motion/Events

Alarms to Search:

☒ Motion Alarm

10/3/2017 02:49:30-529 PM (1 D1)

SightSensor HD HD236-220 Networ

Event	Alarm	Start Time	Note
Triggered	Motion Alarm	10/3/2017 2:40:52 PM	
Triggered	Motion Alarm	10/3/2017 2:44:59 PM	
Triggered	Motion Alarm	10/3/2017 2:47:52 PM	
Triggered	Motion Alarm	10/3/2017 2:48:15 PM	
Triggered	Motion Alarm	10/3/2017 2:50:36 PM	
Triggered	Motion Alarm	10/3/2017 2:53:36 PM	
Triggered	Motion Alarm	10/3/2017 2:53:17 PM	
Triggered	Motion Alarm	10/3/2017 2:54:18 PM	
Triggered	Motion Alarm	10/3/2017 2:55:49 PM	
Triggered	Motion Alarm	10/3/2017 2:56:52 PM	
Triggered	Motion Alarm	10/3/2017 2:59:33 PM	
Triggered	Motion Alarm	10/3/2017 3:01:34 PM	
Triggered	Motion Alarm	10/3/2017 3:02:49 PM	
Triggered	Motion Alarm	10/3/2017 3:03:45 PM	
Triggered	Motion Alarm	10/3/2017 3:04:12 PM	
Triggered	Motion Alarm	10/3/2017 3:05:01 PM	
Triggered	Motion Alarm	10/3/2017 3:09:00 PM	

Triggered

Start: Tue, Oct 03, 2017 2:49:30 PM

End: Tue, Oct 03, 2017 2:49:30 PM

Alarm: Motion Alarm

Export this event

Bookmark this event

Export results to a file

2:49:30 PM

Timeline view showing motion events as red bars.

Bookmarks

(c) 2024 SightLogix | 745 Alexander Rd | Princeton NJ | 08540 | +1 609.951.0008